



**ELECTRONIC COPY**

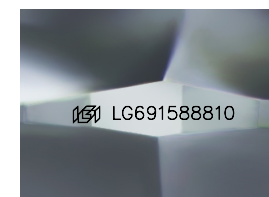
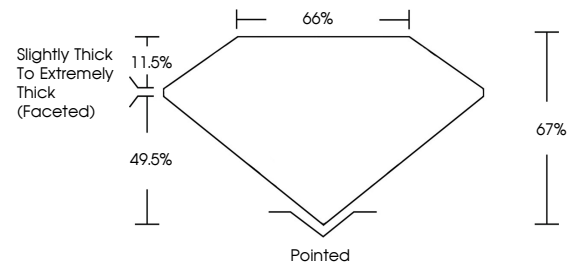
LG691588810  
Report verification at igi.org



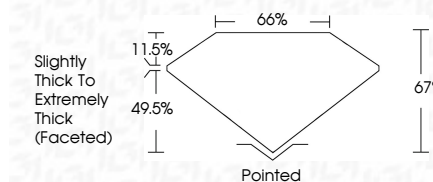
April 3, 2025  
IGI Report Number **LG691588810**  
Description **LABORATORY GROWN DIAMOND**  
Shape and Cutting Style **CUSHION MODIFIED BRILLIANT**  
Measurements **10.42 X 7.79 X 5.22 MM**  
**GRADING RESULTS**  
Carat Weight **3.84 CARATS**  
Color Grade **D**  
Clarity Grade **VVS 2**

April 3, 2025  
IGI Report Number **LG691588810**  
Description **LABORATORY GROWN DIAMOND**  
Shape and Cutting Style **CUSHION MODIFIED BRILLIANT**  
Measurements **10.42 X 7.79 X 5.22 MM**  
**GRADING RESULTS**  
Carat Weight **3.84 CARATS**  
Color Grade **D**  
Clarity Grade **VVS 2**

**PROPORTIONS**



Sample Image Used



**ADDITIONAL GRADING INFORMATION**  
Polish **EXCELLENT**  
Symmetry **EXCELLENT**  
Fluorescence **NONE**  
Inscription(s) **IGI LG691588810**

Comments: This Laboratory Grown Diamond was created by Chemical Vapor Deposition (CVD) growth process. Type IIa

**COLOR**

D E F G H I J Faint Very Light Light

**CLARITY**

FL	IF	VS <sup>1-2</sup>	VS <sup>1-2</sup>	SI <sup>1-2</sup>	I <sup>1-3</sup>
Flawless	Internally Flawless	Very Very Slightly Included	Very Slightly Included	Slightly Included	Included

**ADDITIONAL GRADING INFORMATION**

Polish **EXCELLENT**  
Symmetry **EXCELLENT**  
Fluorescence **NONE**  
Inscription(s) **IGI LG691588810**  
Comments: This Laboratory Grown Diamond was created by Chemical Vapor Deposition (CVD) growth process. Type IIa



**IGI**



April 3, 2025  
IGI Report No **LG691588810**  
**CUSHION MODIFIED BRILLIANT**  
**10.42 X 7.79 X 5.22 MM**  
Carat Weight **3.84 CARATS**  
Color Grade **D**  
Clarity Grade **VVS 2**  
Table **67%**  
Depth **65%**  
Girdle **Slightly Thick To Extremely Thick (Faceted)**  
Culet **Pointed**  
Polish **EXCELLENT**  
Symmetry **EXCELLENT**  
Fluorescence **NONE**  
Inscription(s) **IGI LG691588810**  
Comments: This Laboratory Grown Diamond was created by Chemical Vapor Deposition (CVD) growth process. Type IIa