



**ELECTRONIC COPY**

LG692548360  
Report verification at igi.org



April 8, 2025

IGI Report Number **LG692548360**

Description **LABORATORY GROWN DIAMOND**

Shape and Cutting Style **ROUND BRILLIANT**

Measurements **8.13 - 8.18 X 5.00 MM**

**GRADING RESULTS**

Carat Weight **2.04 CARATS**

Color Grade **FANCY VIVID PINK**

Clarity Grade **VS 1**

Cut Grade **IDEAL**

April 8, 2025

IGI Report Number **LG692548360**

Description **LABORATORY GROWN DIAMOND**

Shape and Cutting Style **ROUND BRILLIANT**

Measurements **8.13 - 8.18 X 5.00 MM**

**GRADING RESULTS**

Carat Weight **2.04 CARATS**

Color Grade **FANCY VIVID PINK**

Clarity Grade **VS 1**

Cut Grade **IDEAL**

**ADDITIONAL GRADING INFORMATION**

Polish **EXCELLENT**

Symmetry **EXCELLENT**

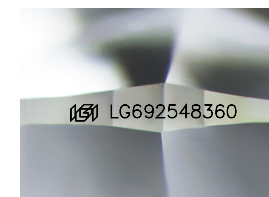
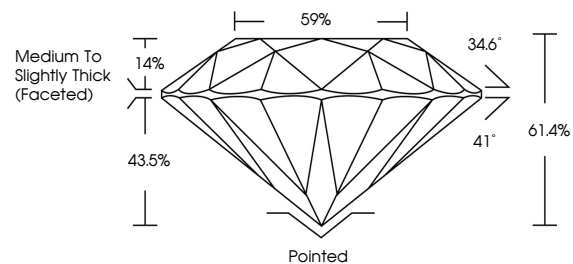
Fluorescence **SLIGHT**

Inscription(s) **LG692548360**

Comments: This Laboratory Grown Diamond was created by Chemical Vapor Deposition (CVD) growth process.

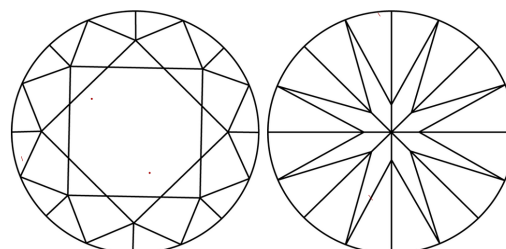
Indications of post-growth treatment.

**PROPORTIONS**



Sample Image Used

**CLARITY CHARACTERISTICS**



**KEY TO SYMBOLS**

Red symbols indicate internal characteristics.  
Green symbols indicate external characteristics.

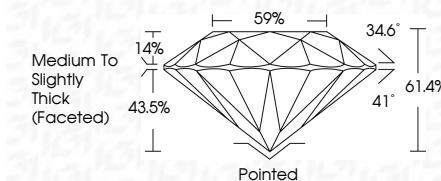
**COLOR**

D E F G H I J Faint Very Light Light

**CLARITY**

IF VS<sup>1-2</sup> VS<sup>1-2</sup> SI<sup>1-2</sup> I<sup>1-3</sup>

Internally Flawless Very Very Slightly Included Very Slightly Included Slightly Included Included



**ADDITIONAL GRADING INFORMATION**

Polish **EXCELLENT**

Symmetry **EXCELLENT**

Fluorescence **SLIGHT**

Inscription(s) **LG692548360**

Comments: This Laboratory Grown Diamond was created by Chemical Vapor Deposition (CVD) growth process. Indications of post-growth treatment.



**IGI**



April 8, 2025  
IGI Report No LG692548360  
ROUND BRILLIANT

8.13 - 8.18 X 5.00 MM

2.04 CARATS  
FANCY VIVID PINK

VS 1  
IDEAL

59%  
Medium To Slightly Thick (Faceted)

Pointed  
EXCELLENT  
EXCELLENT  
SLIGHT

Polish  
Symmetry  
Fluorescence  
Inscription(s)

IGI LG692548360

Comments: This Laboratory Grown Diamond was created by Chemical Vapor Deposition (CVD) growth process. Indications of post-growth treatment.