



ELECTRONIC COPY

LG692597819
Report verification at igi.org



April 22, 2025
IGI Report Number **LG692597819**
Description **LABORATORY GROWN DIAMOND**
Shape and Cutting Style **CUSHION MIXED CUT**
Measurements **13.13 X 8.70 X 4.83 MM**
GRADING RESULTS
Carat Weight **5.65 CARATS**
Color Grade **FANCY INTENSE YELLOW**
Clarity Grade **VVS 2**

LABORATORY GROWN DIAMOND REPORT

April 22, 2025
IGI Report Number **LG692597819**
Description **LABORATORY GROWN DIAMOND**
Shape and Cutting Style **CUSHION MIXED CUT**
Measurements **13.13 X 8.70 X 4.83 MM**

GRADING RESULTS

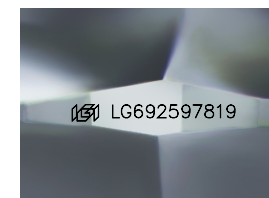
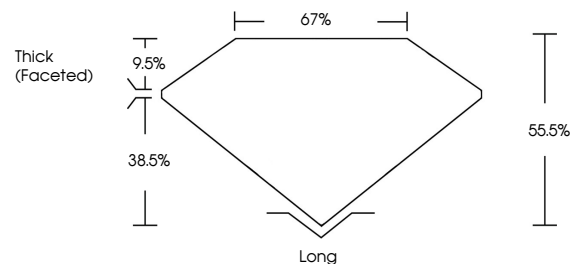
Carat Weight **5.65 CARATS**
Color Grade **FANCY INTENSE YELLOW**
Clarity Grade **VVS 2**

ADDITIONAL GRADING INFORMATION

Polish **EXCELLENT**
Symmetry **EXCELLENT**
Fluorescence **NONE**
Inscription(s) **IGI LG692597819**

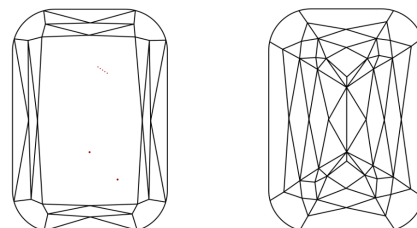
Comments: This Laboratory Grown Diamond was created by Chemical Vapor Deposition (CVD) growth process.

PROPORTIONS



Sample Image Used

CLARITY CHARACTERISTICS



KEY TO SYMBOLS

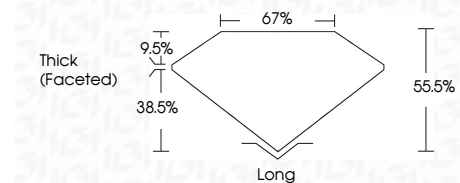
Red symbols indicate internal characteristics.
Green symbols indicate external characteristics.

COLOR

D E F G H I J Faint Very Light Light

CLARITY

IF	VS ¹⁻²	VS ¹⁻²	SI ¹⁻²	I ¹⁻³
Internally Flawless	Very Very Slightly Included	Very Slightly Included	Slightly Included	Included



ADDITIONAL GRADING INFORMATION

Polish **EXCELLENT**
Symmetry **EXCELLENT**
Fluorescence **NONE**
Inscription(s) **IGI LG692597819**
Comments: This Laboratory Grown Diamond was created by Chemical Vapor Deposition (CVD) growth process.



April 22, 2025
IGI Report No LG692597819
CUSHION MIXED CUT
13.13 X 8.70 X 4.83 MM
5.65 CARATS
FANCY INTENSE YELLOW
VVS 2
5.65
0.7%
Thick (Faceted)
Long
EXCELLENT
EXCELLENT
NONE
IGI LG692597819
Comments: This Laboratory Grown Diamond was created by Chemical Vapor Deposition (CVD) growth process.