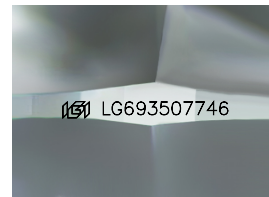
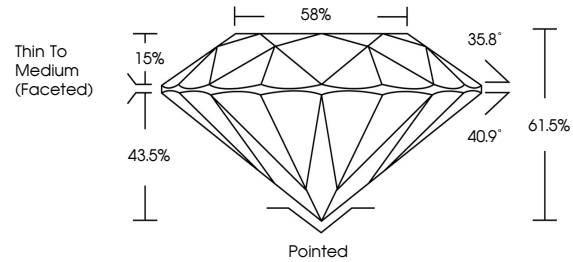




LABORATORY GROWN DIAMOND REPORT

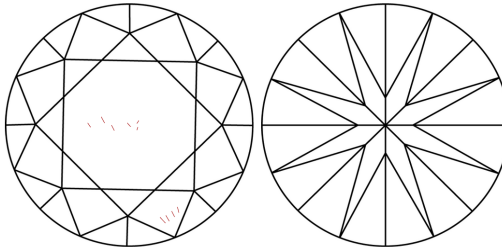
LG693507746
Report verification at igi.org

PROPORTIONS



Sample Image Used

CLARITY CHARACTERISTICS



KEY TO SYMBOLS

Red symbols indicate internal characteristics.
Green symbols indicate external characteristics.

COLOR

D E F G H I J Faint Very Light Light

CLARITY

IF WS¹⁻² VS¹⁻² SI¹⁻² I¹⁻³

Internally Flawless	Very Very Slightly Included	Very Slightly Included	Slightly Included	Included
------------------------	--------------------------------	---------------------------	----------------------	----------



© IGI 2020, International Gemological Institute

FD - 10 20



March 27, 2025

IGI Report Number **LG693507746**

Description	LABORATORY GROWN DIAMOND
-------------	--------------------------

Shape and Cutting Style **ROUND BRILLIANT**

Measurements 7.19 - 7.24 X 4.44 MM

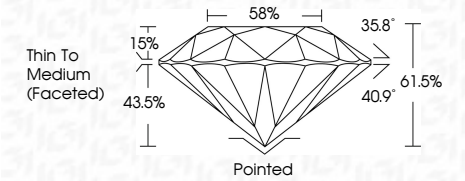
GRADING RESULTS

Carat Weight **1.41 CARAT**

Color Grade **D**

Clarity Grade **VVS 2**

Cut Grade **IDEAL**



ADDITIONAL GRADING INFORMATION

Polish **EXCELLENT**Symmetry **EXCELLENT**Fluorescence **NONE**Inscription(s) **151 LG693507746**

Comments: As Grown - No indication of post-growth treatment.

This Laboratory Grown Diamond was created by High Pressure High Temperature (HPHT) growth process.
Type II



IGI

March 27, 2025	IGI Report No LG9380746		1.41 CARAT	
ROUND BRILLIANT	7.19 - 7.24 X 4.44 MM	D	VVS 2	Polished
	Color Grade	Clarity Grade	ID54L	EXCELLENT
	Cut Grade	Depth	61.5%	EXCELLENT
	Table	Girdle	Thin To Medium	NONE
			(Faceted)	1691 LG9380746
	Culet	Fluorescence		Comments:
	Polish	Symmetry		As Grown - No indication of post-growth treatment.
		Inscriptions		This Laboratory Grown Diamond was created by High Pressure High Temperature (HPHT) growth process.
				Type II