



**ELECTRONIC COPY**

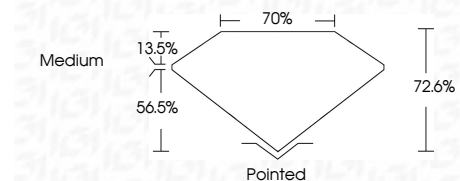
LG693532330  
Report verification at igi.org



March 25, 2025  
IGI Report Number **LG693532330**  
Description **LABORATORY GROWN DIAMOND**  
Shape and Cutting Style **PRINCESS CUT**  
Measurements **6.93 X 6.83 X 4.96 MM**

**GRADING RESULTS**

Carat Weight **2.06 CARATS**  
Color Grade **E**  
Clarity Grade **VS 1**



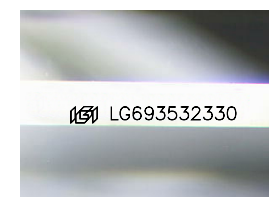
**ADDITIONAL GRADING INFORMATION**

Polish **EXCELLENT**  
Symmetry **EXCELLENT**  
Fluorescence **NONE**  
Inscription(s) **IGI LG693532330**  
Comments: This Laboratory Grown Diamond was created by Chemical Vapor Deposition (CVD) growth process.  
Type IIa



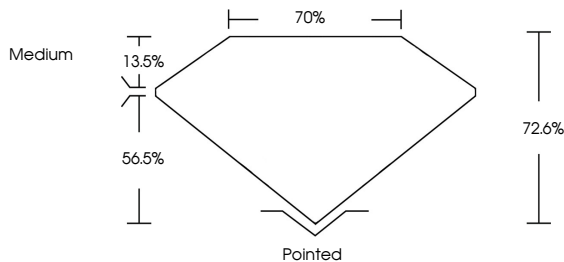
March 25, 2025  
IGI Report No. **LG693532330**  
**PRINCESS CUT**  
2.06 CARATS **E**  
Carat Weight **6.93 X 6.83 X 4.96 MM**  
Color Grade **VS 1**  
Clarity Grade **72.6%**  
Depth **70%**  
Table **Medium**  
Girdle **Pointed**  
Culet **EXCELLENT**  
Polish **EXCELLENT**  
Symmetry **NONE**  
Fluorescence **IGI LG693532330**  
Inscription(s)

Comments: This Laboratory Grown Diamond was created by Chemical Vapor Deposition (CVD) growth process.  
Type IIa

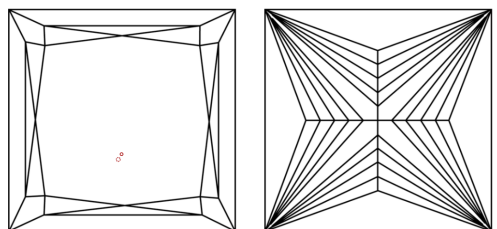


Sample Image Used

**PROPORTIONS**



**CLARITY CHARACTERISTICS**



**KEY TO SYMBOLS**

Red symbols indicate internal characteristics.  
Green symbols indicate external characteristics.

**COLOR**

D	E	F	G	H	I	J	Faint	Very Light	Light
---	---	---	---	---	---	---	-------	------------	-------

**CLARITY**

IF	VS <sup>1-2</sup>	VS <sup>1-2</sup>	SI <sup>1-2</sup>	I <sup>1-3</sup>
Internally Flawless	Very Very Slightly Included	Very Slightly Included	Slightly Included	Included

March 25, 2025  
IGI Report Number **LG693532330**  
Description **LABORATORY GROWN DIAMOND**  
Shape and Cutting Style **PRINCESS CUT**  
Measurements **6.93 X 6.83 X 4.96 MM**  
**GRADING RESULTS**  
Carat Weight **2.06 CARATS**  
Color Grade **E**  
Clarity Grade **VS 1**  
**ADDITIONAL GRADING INFORMATION**  
Polish **EXCELLENT**  
Symmetry **EXCELLENT**  
Fluorescence **NONE**  
Inscription(s) **IGI LG693532330**

Comments: This Laboratory Grown Diamond was created by Chemical Vapor Deposition (CVD) growth process.  
Type IIa

