



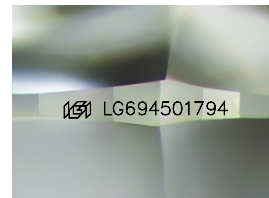
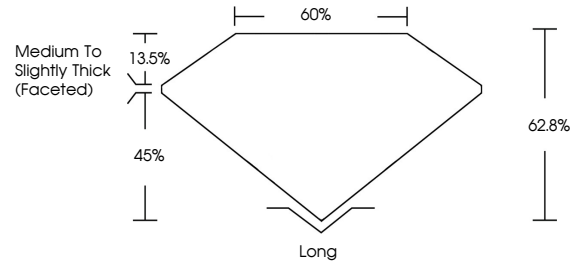
**INTERNATIONAL  
GEMOLOGICAL  
INSTITUTE**

**ELECTRONIC COPY**

## LABORATORY GROWN DIAMOND REPORT

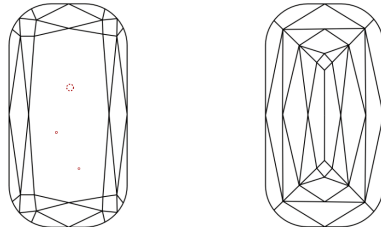
LG694501794  
Report verification at [igi.org](https://igi.org)

## PROPORTIONS



Sample Image Used

## CLARITY CHARACTERISTICS



## KEY TO SYMBOLS

Red symbols indicate internal characteristics.  
Green symbols indicate external characteristics.

## COLOR

D E F G H I J Faint Very Light Light

## CLARITY

IF      WS<sup>1-2</sup>      VS<sup>1-2</sup>      SI<sup>1-2</sup>      I<sup>1-3</sup>

|                        |                                |                           |                      |          |
|------------------------|--------------------------------|---------------------------|----------------------|----------|
| Internally<br>Flawless | Very Very<br>Slightly Included | Very<br>Slightly Included | Slightly<br>Included | Included |
|------------------------|--------------------------------|---------------------------|----------------------|----------|



© IGI 2020, International Gemological Institute

FD - 10 20

**www.igi.org**



THIS DOCUMENT WAS PRODUCED WITH THE FOLLOWING SECURITY MEASURES: SPECIAL DOCUMENT PAPER, INK SCREENS, WATERMARK BACKGROUND DESIGNS, HOLOGRAM AND OTHER SECURITY FEATURES NOT LISTED AND DO EXCEED DOCUMENT SECURITY INDUSTRY GUIDELINES.

## LABORATORY GROWN DIAMOND REPORT



April 5, 2025

IGI Report Number **LG694501794**

|             |                          |
|-------------|--------------------------|
| Description | LABORATORY GROWN DIAMOND |
|-------------|--------------------------|

Shape and Cutting Style **CUSHION MIXED CUT**

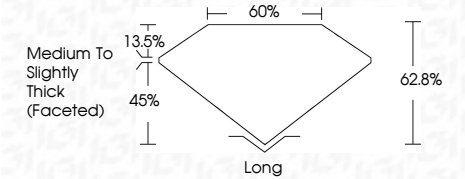
Measurements **14.16 X 10.04 X 6.31 MM**

## GRADING RESULTS

Carat Weight **8.68 CARATS**

|             |   |
|-------------|---|
| Color Grade | F |
|-------------|---|

Clarity Grade VS 1



### ADDITIONAL GRADING INFORMATION

Polish **EXCELLENT**Symmetry **EXCELLENT**Fluorescence **NONE**Inscription(s)  LG694501794

Comments: This Laboratory Grown Diamond was created by Chemical Vapor Deposition (CVD) growth process.  
Type IIa



IGI

|                   |                           |             |               |       |       |        |                                    |        |           |              |                 |   |
|-------------------|---------------------------|-------------|---------------|-------|-------|--------|------------------------------------|--------|-----------|--------------|-----------------|---|
| April 5, 2025     | IGI Report No LG694801794 |             | 8.68 CARATS   |       | VS 1  |        | Long                               |        | NONE      |              | 691 LG694801794 |   |
| CUSHION MIXED CUT | 14.16 X 10.04 X 6.31 MM   |             | F             |       | 62.8% |        | Medium to Slightly Thick (faceted) |        | EXCELLENT |              |                 |   |
|                   | Carat Weight              | Color Grade | Clarity Grade | Depth | Table | Girdle | Culet                              | Polish | Symmetry  | Fluorescence | Inscriptions    |   |
|                   |                           |             |               |       |       |        |                                    |        |           |              |                 | Comments:<br>This Laboratory Grown Diamond was created by Chemical Vapor Deposition (CVD) growth process.<br>Type IId |

This Laboratory Grown Diamond was created by Chemical Vapor Deposition (CVD) growth process, type IIa