



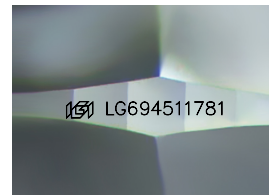
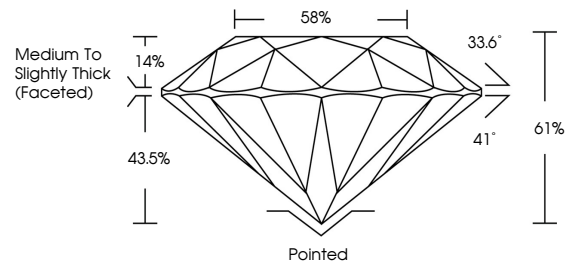
**INTERNATIONAL  
GEMOLOGICAL  
INSTITUTE**

**ELECTRONIC COPY**

## LABORATORY GROWN DIAMOND REPORT

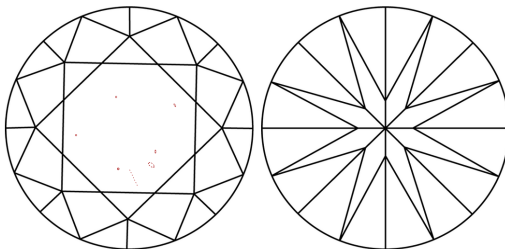
LG694511781  
Report verification at [igi.org](https://igi.org)

## PROPORTIONS



Sample Image Used

## CLARITY CHARACTERISTICS



## KEY TO SYMBOLS

Red symbols indicate internal characteristics.  
Green symbols indicate external characteristics.

## COLOR

D E F G H I J Faint Very Light Light

## CLARITY

IF                      WS<sup>1-2</sup>                      VS<sup>1-2</sup>                      SI<sup>1-2</sup>                      |<sup>1-3</sup>

Internally Flawless	Very Very Slightly Included	Very Slightly Included	Slightly Included	Included
------------------------	--------------------------------	---------------------------	----------------------	----------



© IGI 2020, International Gemological Institute

FD - 10 20

**www.igi.org**

LABORATORY GROWN DIAMOND REPORT



March 25, 2025

IGI Report Number **LG694511781**

Description	LABORATORY GROWN DIAMOND
-------------	--------------------------

Shape and Cutting Style **ROUND BRILLIANT**

Measurements **7.42 - 7.44 X 4.53 MM**

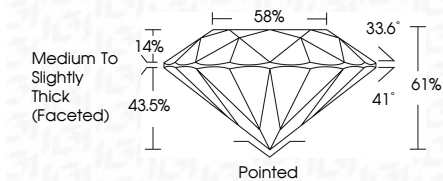
## GRADING RESULTS

Carat Weight **1.54 CARAT**

Color Grade **G**

Clarity Grade VS 1

Cut Grade **IDEAL**



### ADDITIONAL GRADING INFORMATION

Polish **EXCELLENCE**Symmetry **EXCELLENCE**

Fluorescence NONI

Inscription(s)  LG69451178

Comments: This Laboratory Grown Diamond was created by Chemical Vapor Deposition (CVD) growth process.  
Type IIa



IG

March 25, 2025	IGI Report No. LG594611781	
ROUND BRILLIANT		
7.42 - 7.44 X 4.53 MM		
Carat Weight	1.54 CARAT	
Color Grade	VS 1	
Clarity Grade	IDEAL	
Depth	61%	
Table	59%	
Girdle	Medium to Slightly Thick (Faceted)	
Culet	Pointed	
Polish	EXCELLENT	
Symmetry	EXCELLENT	
Fluorescence	NONE	
Inscriptions(s)	4891 LG594611781	
Comments:	<p>Chemically Enhanced Growth Diamond was created by Chemical Vapor Deposition (CVD) growth process.</p> <p>Type IIC</p>	