



ELECTRONIC COPY

LG696503218
Report verification at igi.org



April 7, 2025
IGI Report Number **LG696503218**
Description **LABORATORY GROWN DIAMOND**
Shape and Cutting Style **RECTANGULAR CUSHION MIXED CUT**
Measurements **14.36 X 8.76 X 5.10 MM**
GRADING RESULTS
Carat Weight **6.53 CARATS**
Color Grade **F**
Clarity Grade **VS 2**

April 7, 2025
IGI Report Number **LG696503218**
Description **LABORATORY GROWN DIAMOND**
Shape and Cutting Style **RECTANGULAR CUSHION MIXED CUT**
Measurements **14.36 X 8.76 X 5.10 MM**

GRADING RESULTS

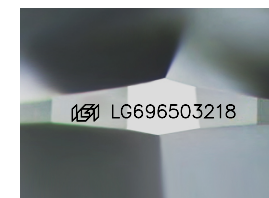
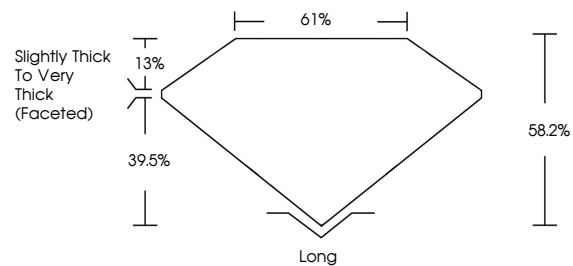
Carat Weight **6.53 CARATS**
Color Grade **F**
Clarity Grade **VS 2**

ADDITIONAL GRADING INFORMATION

Polish **EXCELLENT**
Symmetry **EXCELLENT**
Fluorescence **NONE**
Inscription(s) **IGI LG696503218**

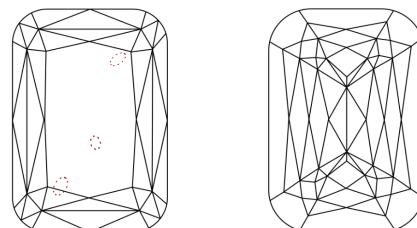
Comments: This Laboratory Grown Diamond was created by Chemical Vapor Deposition (CVD) growth process.
Type IIa

PROPORTIONS



Sample Image Used

CLARITY CHARACTERISTICS



KEY TO SYMBOLS

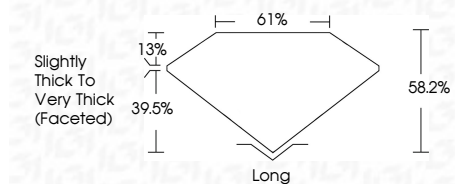
Red symbols indicate internal characteristics.
Green symbols indicate external characteristics.

COLOR

D E F G H I J Faint Very Light Light

CLARITY

IF	VS ¹⁻²	VS ¹⁻²	SI ¹⁻²	I ¹⁻³
Internally Flawless	Very Very Slightly Included	Very Slightly Included	Slightly Included	Included



ADDITIONAL GRADING INFORMATION

Polish **EXCELLENT**
Symmetry **EXCELLENT**
Fluorescence **NONE**
Inscription(s) **IGI LG696503218**
Comments: This Laboratory Grown Diamond was created by Chemical Vapor Deposition (CVD) growth process.
Type IIa



April 7, 2025
IGI Report No **LG696503218**
RECTANGULAR CUSHION MIXED CUT
14.36 X 8.76 X 5.10 MM
Carat Weight **6.53 CARATS**
Color Grade **F**
Clarity Grade **VS 2**
Depth **58.2%**
Table **61%**
Girdle **Slightly Thick To Very Thick (Faceted)**
Culet **Long**
Polish **EXCELLENT**
Symmetry **EXCELLENT**
Fluorescence **NONE**
Inscription(s) **IGI LG696503218**
Comments: This Laboratory Grown Diamond was created by Chemical Vapor Deposition (CVD) growth process.
Type IIa