



# INTERNATIONAL GEMOLOGICAL INSTITUTE

ELECTRONIC COPY

LG696514109



April 24, 2025

IGI Report Number LG696514109  
ROUND BRILLIANT  
LABORATORY GROWN DIAMOND  
5.46 - 5.48 X 3.44 MM

Carat Weight 0.65 CARAT  
Color Grade D  
Clarity Grade VVS 2  
Cut Grade EXCELLENT  
Polish EXCELLENT  
Symmetry EXCELLENT  
Fluorescence NONE  
Inscription(s) IGI LG696514109

Comments: As Grown - No indication of post-growth treatment. This Laboratory Grown Diamond was created by High Pressure High Temperature (HPHT) growth process.

## LABORATORY GROWN DIAMOND REPORT

April 24, 2025  
IGI Report Number LG696514109  
Description LABORATORY GROWN DIAMOND  
Shape and Cutting Style ROUND BRILLIANT  
Measurements 5.46 - 5.48 X 3.44 MM

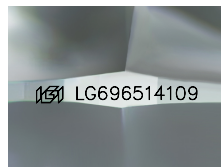
### GRADING RESULTS

Carat Weight 0.65 CARAT  
Color Grade D  
Clarity Grade VVS 2  
Cut Grade EXCELLENT

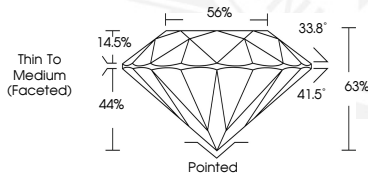
### ADDITIONAL GRADING INFORMATION

Polish EXCELLENT  
Symmetry EXCELLENT  
Fluorescence NONE  
Inscription(s) IGI LG696514109

Comments: As Grown - No indication of post-growth treatment. This Laboratory Grown Diamond was created by High Pressure High Temperature (HPHT) growth process.



Sample Image Used



Thin To  
Medium  
(Faceted)



April 24, 2025

IGI Report Number LG696514109  
ROUND BRILLIANT  
LABORATORY GROWN DIAMOND  
5.46 - 5.48 X 3.44 MM

Carat Weight 0.65 CARAT  
Color Grade D  
Clarity Grade VVS 2  
Cut Grade EXCELLENT  
Polish EXCELLENT  
Symmetry EXCELLENT  
Fluorescence NONE  
Inscription(s) IGI LG696514109

Comments: As Grown - No indication of post-growth treatment. This Laboratory Grown Diamond was created by High Pressure High Temperature (HPHT) growth process.



THIS DOCUMENT WAS PRODUCED WITH THE FOLLOWING SECURITY MEASURES: SPECIAL DOCUMENT PAPER, INK SCREENS, WATERMARK, BACKGROUND DESIGNS, HOLOGRAM AND OTHER SECURITY FEATURES NOT LISTED AND DO EXCEED DOCUMENT SECURITY INDUSTRY GUIDELINES.

For terms & conditions and to verify this report, please visit [www.igi.org](http://www.igi.org)