



# INTERNATIONAL GEMOLOGICAL INSTITUTE

ELECTRONIC COPY

LG696514305



May 5, 2025

IGI Report Number **LG696514305**  
**ROUND BRILLIANT**  
**LABORATORY GROWN DIAMOND**  
**4.21 - 4.23 X 2.67 MM**

Carat Weight **0.30 CARAT**  
Color Grade **D**  
Clarity Grade **VVS 1**  
Cut Grade **VERY GOOD**  
Polish **EXCELLENT**  
Symmetry **EXCELLENT**  
Fluorescence **NONE**  
Inscription(s) **IGI LG696514305**

Comments: As Grown - No indication of post-growth treatment. This Laboratory Grown Diamond was created by High Pressure High Temperature (HPHT) growth process.

## LABORATORY GROWN DIAMOND REPORT

May 5, 2025  
IGI Report Number **LG696514305**  
Description **LABORATORY GROWN DIAMOND**  
Shape and Cutting Style **ROUND BRILLIANT**  
Measurements **4.21 - 4.23 X 2.67 MM**

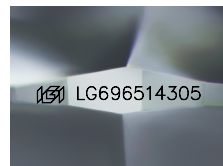
### GRADING RESULTS

Carat Weight **0.30 CARAT**  
Color Grade **D**  
Clarity Grade **VVS 1**  
Cut Grade **VERY GOOD**

### ADDITIONAL GRADING INFORMATION

Polish **EXCELLENT**  
Symmetry **EXCELLENT**  
Fluorescence **NONE**  
Inscription(s) **IGI LG696514305**

Comments: As Grown - No indication of post-growth treatment. This Laboratory Grown Diamond was created by High Pressure High Temperature (HPHT) growth process.



Sample Image Used

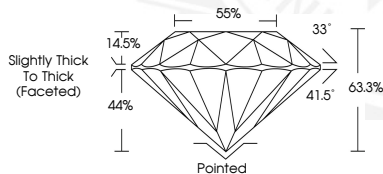


May 5, 2025

IGI Report Number **LG696514305**  
**ROUND BRILLIANT**  
**LABORATORY GROWN DIAMOND**  
**4.21 - 4.23 X 2.67 MM**

Carat Weight **0.30 CARAT**  
Color Grade **D**  
Clarity Grade **VVS 1**  
Cut Grade **VERY GOOD**  
Polish **EXCELLENT**  
Symmetry **EXCELLENT**  
Fluorescence **NONE**  
Inscription(s) **IGI LG696514305**

Comments: As Grown - No indication of post-growth treatment. This Laboratory Grown Diamond was created by High Pressure High Temperature (HPHT) growth process.



THIS DOCUMENT WAS PRODUCED WITH THE FOLLOWING SECURITY MEASURES: SPECIAL DOCUMENT PAPER, INK SCREENS, WATERMARK, BACKGROUND DESIGNS, HOLOGRAM AND OTHER SECURITY FEATURES NOT LISTED AND DO EXCEED DOCUMENT SECURITY INDUSTRY GUIDELINES.

For terms & conditions and to verify this report, please visit [www.igi.org](http://www.igi.org)