

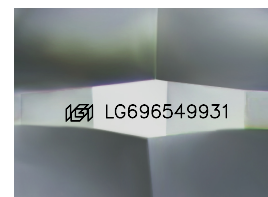
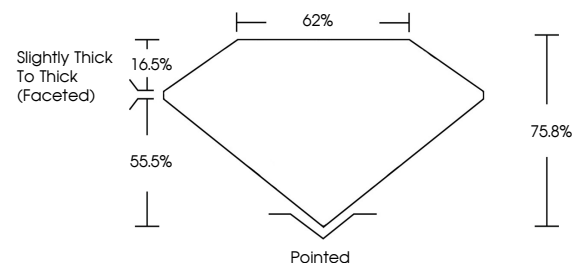


**ELECTRONIC COPY**

## LABORATORY GROWN DIAMOND REPORT

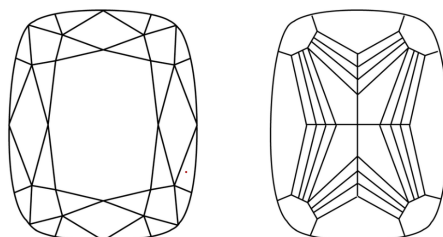
LG696549931  
Report verification at [igi.org](https://igi.org)

## PROPORTIONS



Sample Image Used

## CLARITY CHARACTERISTICS



## KEY TO SYMBOLS

Red symbols indicate internal characteristics.  
Green symbols indicate external characteristics.

## COLOR

D E F G H I J Faint Very Light Light

## CLARITY

IF WS<sup>1-2</sup> VS<sup>1-2</sup> SI<sup>1-2</sup> |<sup>1-3</sup>

Internally Flawless	Very Very Slightly Included	Very Slightly Included	Slightly Included	Included
------------------------	--------------------------------	---------------------------	----------------------	----------

## LABORATORY GROWN DIAMOND REPORT



April 5, 2025

IGI Report Number **LG696549931**Description **LABORATORY GROWN DIAMOND**

Shape and Cutting Style **CUSHION MODIFIED  
BRILLIANT**

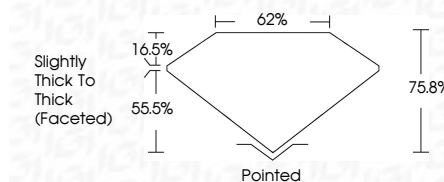
Measurements **8.64 X 6.33 X 4.80 MM**

## GRADING RESULTS

Carat Weight **2.32 CARATS**

Color Grade D

Clarity Grade WS 1



### ADDITIONAL GRADING INFORMATION

Polish **EXCELLENT**Symmetry **EXCELLENT**Fluorescence **NONE**Inscription(s)  LG69654993T

Comments: This Laboratory Grown Diamond was created by Chemical Vapor Deposition (CVD) growth process.  
Type IIa



© IGI 2020, International Gemological Institute

FD - 10 20

**www.igi.org**

April 5, 2025  
 GI Report No LG696549931  
 CUSHION MODIFIED BRILLIANT

6.64 X 6.33 X 4.80 MM		2.32 CARATS	
Carat Weight	Color Grade	D	
Depth	Clarity Grade	VS 1	
Table		75.8%	
Girdle		62%	
		Slightly Thick to Thick (graded)	
Quiet		Pointed	
Polish		EXCELLENT	
Symmetry		EXCELLENT	
Fluorescence		NONE	
GIA REPORT # 6121257823		GIA # 6121257823	

**Comments:**  
This Laboratory Grown Diamond was  
created by Chemical Vapor Deposition  
(CVD) growth process.