



ELECTRONIC COPY

LG696585258 Report verification at igi.org



April 11, 2025 IGI Report Number LG696585258 Description LABORATORY GROWN DIAMOND Shape and Cutting Style CUSHION MODIFIED BRILLIANT Measurements 7.06 X 5.58 X 3.76 MM GRADING RESULTS Carat Weight 1.08 CARAT Color Grade E Clarity Grade VVS 2

LABORATORY GROWN DIAMOND REPORT

April 11, 2025 IGI Report Number LG696585258 Description LABORATORY GROWN DIAMOND Shape and Cutting Style CUSHION MODIFIED BRILLIANT Measurements 7.06 X 5.58 X 3.76 MM

GRADING RESULTS

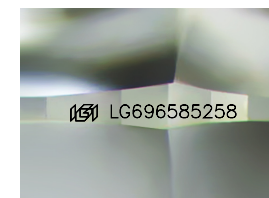
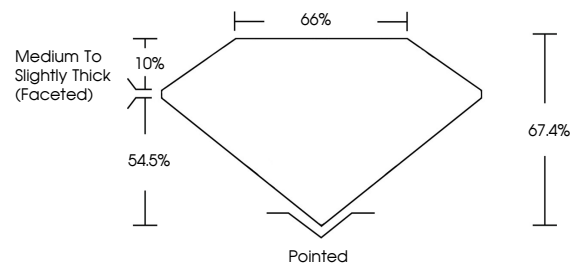
Carat Weight 1.08 CARAT Color Grade E Clarity Grade VVS 2

ADDITIONAL GRADING INFORMATION

Polish EXCELLENT Symmetry EXCELLENT Fluorescence NONE Inscription(s) IGI LG696585258

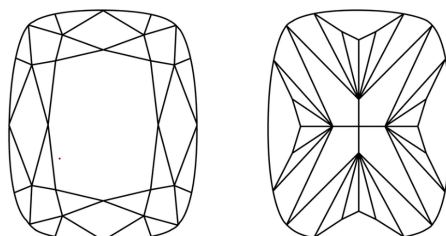
Comments: This Laboratory Grown Diamond was created by Chemical Vapor Deposition (CVD) growth process. Type IIa

PROPORTIONS



Sample Image Used

CLARITY CHARACTERISTICS



KEY TO SYMBOLS

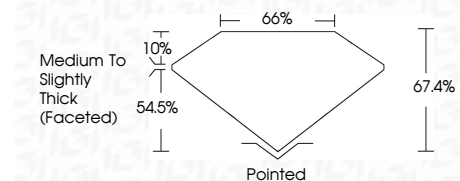
Red symbols indicate internal characteristics. Green symbols indicate external characteristics.

COLOR

D E F G H I J Faint Very Light Light

CLARITY

IF VVS 1-2 VS 1-2 SI 1-2 I 1-3 Internally Flawless Very Very Slightly Included Very Slightly Included Slightly Included Included



ADDITIONAL GRADING INFORMATION

Polish EXCELLENT Symmetry EXCELLENT Fluorescence NONE Inscription(s) IGI LG696585258 Comments: This Laboratory Grown Diamond was created by Chemical Vapor Deposition (CVD) growth process. Type IIa



April 11, 2025 IGI Report No LG696585258 CUSHION MODIFIED BRILLIANT 1.08 CARAT E VVS 2 67.4% 65% Medium to Slightly Thick (Faceted) Pointed EXCELLENT EXCELLENT NONE NONE IGI LG696585258 Comments: This Laboratory Grown Diamond was created by Chemical Vapor Deposition (CVD) growth process. Type IIa