

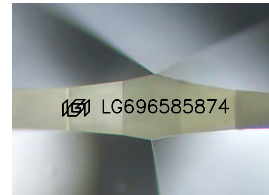
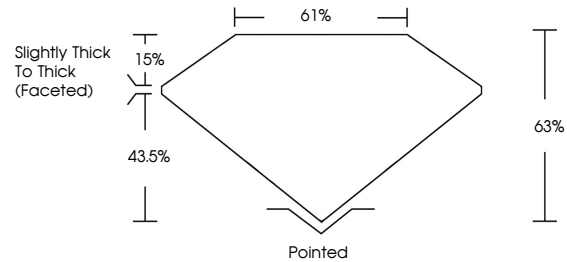


**INTERNATIONAL  
GEMOLOGICAL  
INSTITUTE**

**ELECTRONIC COPY**

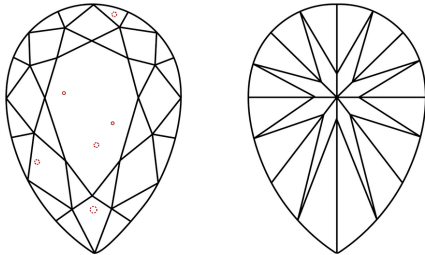
LG696585874  
Report verification at [igi.org](https://igi.org)

## PROPORTIONS



Sample Image Used

## CLARITY CHARACTERISTICS



## KEY TO SYMBOLS

Red symbols indicate internal characteristics.  
Green symbols indicate external characteristics.

## COLOR

D E F G H I J Faint Very Light Light

## CLARITY

IF                      WS<sup>1-2</sup>                      VS<sup>1-2</sup>                      SI<sup>1-2</sup>                      I<sup>1-3</sup>

Internally Flawless	Very Very Slightly Included	Very Slightly Included	Slightly Included	Included
------------------------	--------------------------------	---------------------------	----------------------	----------



April 9, 2025

IGI Report Number **LG696585874**

Description	LABORATORY GROWN DIAMOND
-------------	--------------------------

Shape and Cutting Style **PEAR BRILLIANT**

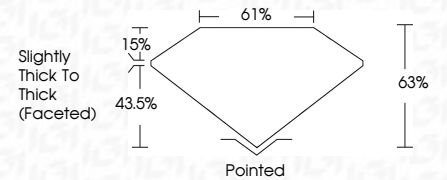
Measurements 10.34 X 6.92 X 4.36 MM

## GRADING RESULTS

**Carat Weight** 1.87 CARAT

Color Grade **E**

Clarity Grade VS 2



### ADDITIONAL GRADING INFORMATION

Polish **EXCELLENT**Symmetry **EXCELLENT**Fluorescence **NONE**Inscription(s)  LG696585874

Comments: This Laboratory Grown Diamond was created by Chemical Vapor Deposition (CVD) growth process.  
Type IIa



IGI



© IGI 2020, International Gemological Institute

FD - 10 20

**www.igi.org**

April 9, 2025  
IGI Report No LG696585874  
PEAR BRILLIANT

10.34 X 6.92 X 4.36 MM		1.87 CARAT	
Carat Weight	Color Grade	E	
Clarity Grade	Depth	VS 2	Pointed
Table	Grade	63%	EXCELLENT
Grade		61%	EXCELLENT
		Slightly Thick To Thin (faceted)	
Culet			NONE
Polish			1691 LG09688674
Symmetry			
Fluorescence			
Inscriptions(s)			

**Comments:**  
This Laboratory Grown Diamond was created by Chemical Vapor Deposition (CVD) growth process.  
Type IIa