

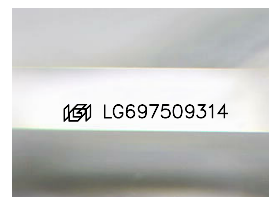
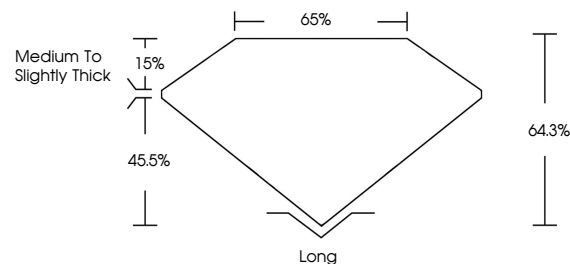


**ELECTRONIC COPY**

## LABORATORY GROWN DIAMOND REPORT

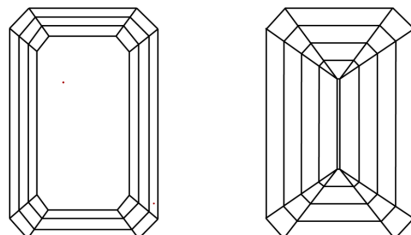
LG697509314  
Report verification at [lgi.org](https://lgi.org)

## PROPORTIONS



Sample Image Used

## CLARITY CHARACTERISTICS



## KEY TO SYMBOLS

Red symbols indicate internal characteristics.  
Green symbols indicate external characteristics.

## COLOR

D E F G H I J Faint Very Light Light

## CLARITY

IF      VWS<sup>1-2</sup>      VS<sup>1-2</sup>      SI<sup>1-2</sup>      I<sup>1-3</sup>

Internally Flawless	Very Very Slightly Included	Very Slightly Included	Slightly Included	Included
------------------------	--------------------------------	---------------------------	----------------------	----------

## LABORATORY GROWN DIAMOND REPORT



April 7, 2025

IGI Report Number **LG697509314**

Description	LABORATORY GROWN DIAMOND
-------------	--------------------------

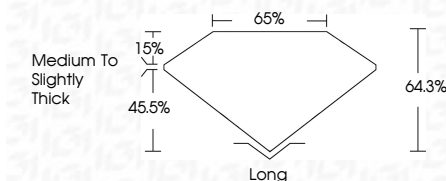
Shape and Cutting Style **EMERALD CUT**

Measurements 11.23 X 8.02 X 5.16 MM

## GRADING RESULTS

Carat Weight **4.73 CARATS**

Color Grade	D
-------------	---

Clarity Grade **VVS 2**

### ADDITIONAL GRADING INFORMATION

Polish **EXCELLENT**Symmetry **EXCELLENT**Fluorescence **NONE**Inscription(s)  LG697509314

Comments: This Laboratory Grown Diamond was created by Chemical Vapor Deposition (CVD) growth process.  
Type IIa



**www.igi.org**

© IGI 2020, International Gemological Institute

FD - 10 20



THIS DOCUMENT WAS PRODUCED WITH THE FOLLOWING SECURITY MEASURES: SPECIAL DOCUMENT PAPER, INK SCREENS, WATERMARK, BACKGROUND DESIGNS, HOLOGRAM AND OTHER SECURITY FEATURES NOT LISTED AND DO EXCEED DOCUMENT SECURITY INDUSTRY GUIDELINES

April 7, 2025  
 IGI Report No LG697509314  
 EMERALD CITY

11.23 X 9.02 X 5.16 MM	Carat Weight	4.73 CARATS
	Color Grade	D
	Clarity Grade	VS 2
	Depth	64.9%
	Table	65%
	Girdle	Medium To Slightly Thick
	Culet	Long
	Polish	EXCELLENT
	Symmetry	EXCELLENT
	Fluorescence	NONE
	Inscriptions(s)	see 1549779014

**Comments:**  
This Laboratory Grown Diamond was created by Chemical Vapor Deposition (CVD) growth process.