



**ELECTRONIC COPY**

LG697513000  
Report verification at igi.org



April 12, 2025

IGI Report Number **LG697513000**

Description **LABORATORY GROWN DIAMOND**

Shape and Cutting Style **CUT CORNERED  
RECTANGULAR MODIFIED  
BRILLIANT**

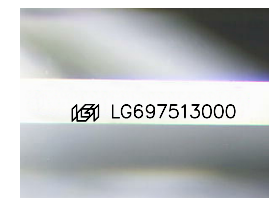
Measurements **11.97 X 8.50 X 5.80 MM**

**GRADING RESULTS**

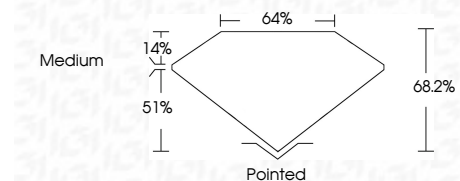
Carat Weight **5.09 CARATS**

Color Grade **F**

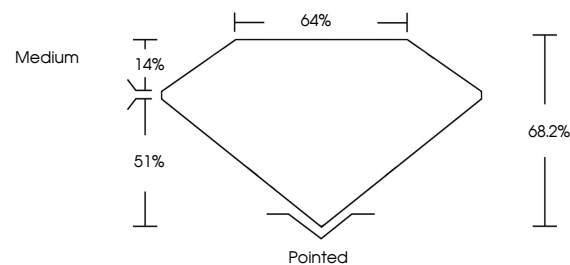
Clarity Grade **VVS 2**



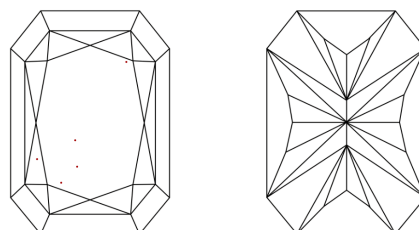
Sample Image Used



**PROPORTIONS**



**CLARITY CHARACTERISTICS**



**KEY TO SYMBOLS**

Red symbols indicate internal characteristics.  
Green symbols indicate external characteristics.

**COLOR**

D E F G H I J Faint Very Light Light

**CLARITY**

IF VS<sup>1-2</sup> VS<sup>1-2</sup> SI<sup>1-2</sup> I<sup>1-3</sup>

Internally Flawless Very Very Slightly Included Very Slightly Included Slightly Included Included

**ADDITIONAL GRADING INFORMATION**

Polish **EXCELLENT**

Symmetry **EXCELLENT**

Fluorescence **NONE**

Inscription(s) **IGI LG697513000**

Comments: This Laboratory Grown Diamond was created by Chemical Vapor Deposition (CVD) growth process. Type IIa



**IGI**



April 12, 2025  
IGI Report No LG697513000  
CUT CORNERED RECT. MODIFIED BRILLIANT  
5.09 CARATS  
F  
5.09 CARATS  
F  
VVS 2  
68.2%  
64%  
51%  
Medium  
Pointed  
EXCELLENT  
EXCELLENT  
NONE  
IGI LG697513000  
Comments: This Laboratory Grown Diamond was created by Chemical Vapor Deposition (CVD) growth process. Type IIa