

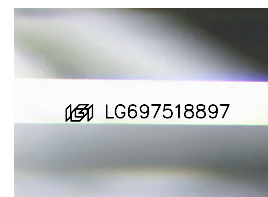
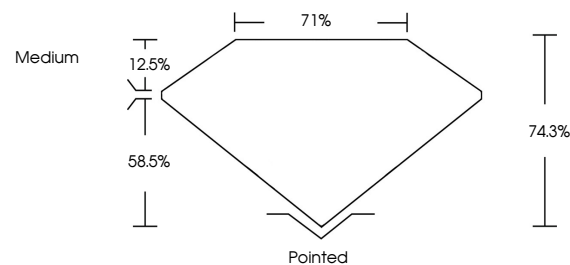


ELECTRONIC COPY

LABORATORY GROWN DIAMOND REPORT

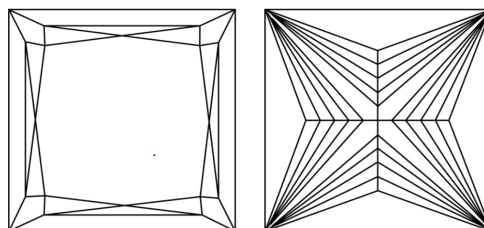
LG697518897
Report verification at igi.org

PROPORTIONS



Sample Image Used

CLARITY CHARACTERISTICS



KEY TO SYMBOLS

Red symbols indicate internal characteristics.
Green symbols indicate external characteristics.

COLOR

D E F G H I J Faint Very Light Light

CLARITY

IF VWS¹⁻² VS¹⁻² SI¹⁻² I¹⁻³

| | | | | |
|------------------------|--------------------------------|---------------------------|----------------------|----------|
| Internally Flawless | Very Very Slightly Included | Very Slightly Included | Slightly Included | Included |
|------------------------|--------------------------------|---------------------------|----------------------|----------|

LABORATORY GROWN DIAMOND REPORT



April 7, 2025

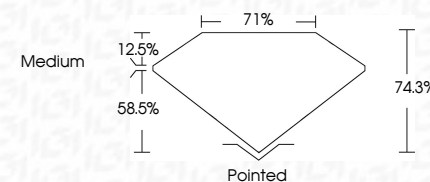
IGI Report Number **LG697518897**Description **LABORATORY GROWN DIAMOND**Shape and Cutting Style **PRINCESS CUT**

Measurements **7.91 X 7.86 X 5.84 MM**

GRADING RESULTS

Carat Weight **3.20 CARATS**

| Color Grade | F |
|-------------|---|
|-------------|---|

Clarity Grade VVS 2

ADDITIONAL GRADING INFORMATION

Polish **EXCELLENT**Symmetry **EXCELLENT**Fluorescence **NONE**Inscription(s)  LG697518897

Comments: This Laboratory Grown Diamond was created by Chemical Vapor Deposition (CVD) growth process.
Type IIa



www.igi.org

© IGI 2020, International Gemological Institute

FD - 10 20



THIS DOCUMENT WAS PRODUCED WITH THE FOLLOWING SECURITY MEASURES: SPECIAL DOCUMENT PAPER, INK SCREENS, WATERMARK, BACKGROUND DESIGNS, HOLOGRAM AND OTHER SECURITY FEATURES NOT LISTED AND DO EXCEED DOCUMENT SECURITY INDUSTRY GUIDELINES

April 7, 2025
IGI Report No LG697518897
PRINCESS CUT

| | |
|-----------------------|-------------|
| 7.91 X 7.86 X 5.64 MM | 3.20 CARATS |
| Carat Weight | F |
| Color Grade | VVS 2 |
| Clarity Grade | 74.9% |
| Depth | 71% |
| Table | Medium |
| Girdle | Pointed |
| Culet | EXCELLENT |
| Polish | EXCELLENT |
| Symmetry | NONE |
| Fluorescence | None |

Comments:
This Laboratory Grown Diamond was created by Chemical Vapor Deposition (CVD) growth process.