



INTERNATIONAL GEMOLOGICAL INSTITUTE

ELECTRONIC COPY

LABORATORY GROWN DIAMOND REPORT

April 16, 2025
IGI Report Number **LG698502943**
Description **LABORATORY GROWN DIAMOND**
Shape and Cutting Style **EMERALD CUT**
Measurements **5.75 X 3.97 X 2.40 MM**

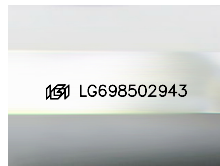
GRADING RESULTS

Carat Weight **0.53 CARAT**
Color Grade **D**
Clarity Grade **VS 2**

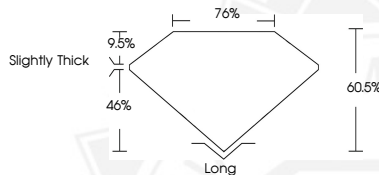
ADDITIONAL GRADING INFORMATION

Polish **VERY GOOD**
Symmetry **GOOD**
Fluorescence **NONE**
Inscription(s) **IGI LG698502943**

Comments: As Grown - No indication of post-growth treatment.
This Laboratory Grown Diamond was created by High Pressure High Temperature (HPHT) growth process.
Type II



Sample Image Used



April 16, 2025
IGI Report Number **LG698502943**
EMERALD CUT
LABORATORY GROWN DIAMOND
5.75 X 3.97 X 2.40 MM
Carat Weight **0.53 CARAT**
Color Grade **D**
Clarity Grade **VS 2**
Polish **VERY GOOD**
Symmetry **GOOD**
Fluorescence **NONE**
Inscription(s) **IGI LG698502943**

Comments: As Grown - No indication of post-growth treatment. This Laboratory Grown Diamond was created by High Pressure High Temperature (HPHT) growth process. Type II



April 16, 2025
IGI Report Number **LG698502943**
EMERALD CUT
LABORATORY GROWN DIAMOND
5.75 X 3.97 X 2.40 MM
Carat Weight **0.53 CARAT**
Color Grade **D**
Clarity Grade **VS 2**
Polish **VERY GOOD**
Symmetry **GOOD**
Fluorescence **NONE**
Inscription(s) **IGI LG698502943**

Comments: As Grown - No indication of post-growth treatment. This Laboratory Grown Diamond was created by High Pressure High Temperature (HPHT) growth process. Type II



THIS DOCUMENT WAS PRODUCED WITH THE FOLLOWING SECURITY MEASURES: SPECIAL DOCUMENT PAPER, INK SCREENS, WATERMARK, BACKGROUND DESIGNS, HOLOGRAM AND OTHER SECURITY FEATURES NOT LISTED AND DO EXCEED DOCUMENT SECURITY INDUSTRY GUIDELINES.

For terms & conditions and to verify this report, please visit www.igi.org