



ELECTRONIC COPY

LG698507071 Report verification at igi.org



April 12, 2025
IGI Report Number LG698507071
Description LABORATORY GROWN DIAMOND
Shape and Cutting Style ROUND BRILLIANT
Measurements 10.41 - 10.45 X 6.12 MM
GRADING RESULTS
Carat Weight 4.03 CARATS
Color Grade D
Clarity Grade INTERNALLY FLAWLESS
Cut Grade EXCELLENT

April 12, 2025
IGI Report Number LG698507071
Description LABORATORY GROWN DIAMOND
Shape and Cutting Style ROUND BRILLIANT
Measurements 10.41 - 10.45 X 6.12 MM

GRADING RESULTS

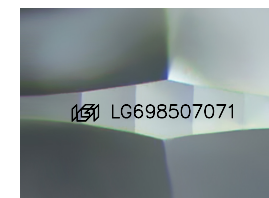
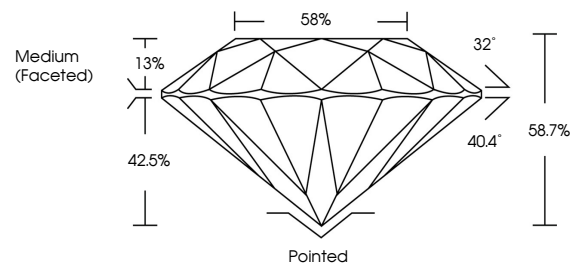
Carat Weight 4.03 CARATS
Color Grade D
Clarity Grade INTERNALLY FLAWLESS
Cut Grade EXCELLENT

ADDITIONAL GRADING INFORMATION

Polish EXCELLENT
Symmetry EXCELLENT
Fluorescence NONE
Inscription(s) IGI LG698507071

Comments: This Laboratory Grown Diamond was created by Chemical Vapor Deposition (CVD) growth process. Type IIa

PROPORTIONS



Sample Image Used

CLARITY CHARACTERISTICS



KEY TO SYMBOLS

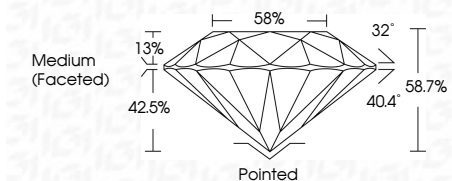
Red symbols indicate internal characteristics. Green symbols indicate external characteristics.

COLOR

D E F G H I J Faint Very Light Light

CLARITY

IF VS 1-2 VS 1-2 SI 1-2 I 1-3
Internally Flawless Very Very Slightly Included Very Slightly Included Slightly Included Included



ADDITIONAL GRADING INFORMATION

Polish EXCELLENT
Symmetry EXCELLENT
Fluorescence NONE
Inscription(s) IGI LG698507071
Comments: This Laboratory Grown Diamond was created by Chemical Vapor Deposition (CVD) growth process. Type IIa



IGI



April 12, 2025
IGI Report No LG698507071
ROUND BRILLIANT
10.41 - 10.45 X 6.12 MM
4.03 CARATS
Color Grade D
Clarity Grade EXCELLENT
Depth 58.7%
Table 58%
Medium (Faceted)
Culet Pointed
Polish EXCELLENT
Symmetry EXCELLENT
Fluorescence NONE
Inscriptions(s) IGI LG698507071
Comments: This Laboratory Grown Diamond was created by Chemical Vapor Deposition (CVD) growth process. Type IIa