



**ELECTRONIC COPY**

## LABORATORY GROWN DIAMOND REPORT

|                         |                                      |
|-------------------------|--------------------------------------|
| April 18, 2025          |                                      |
| IGI Report Number       | LG698513789                          |
| Description             | LABORATORY GROWN DIAMOND             |
| Shape and Cutting Style | SQUARE CUSHION MODIFIED<br>BRILLIANT |
| Measurements            | 6.75 X 6.73 X 4.60 MM                |

## GRADING RESULTS

|               |            |
|---------------|------------|
| Carat Weight  | 1.65 CARAT |
| Color Grade   | D          |
| Clarity Grade | VS 1       |

### ADDITIONAL GRADING INFORMATION

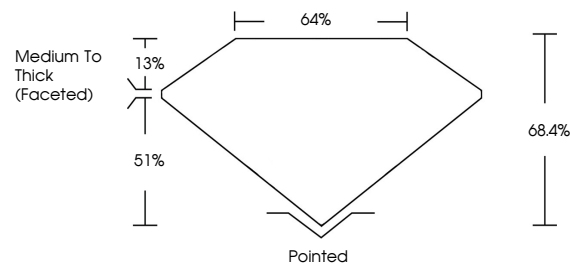
|                |   |
|----------------|---|
| Polish         | EXCELLENT   |
| Symmetry       | EXCELLENT   |
| Fluorescence   | NONE  |
| Inscription(s) |  LG698513789 |

Comments: As Grown - No indication of post-growth treatment.

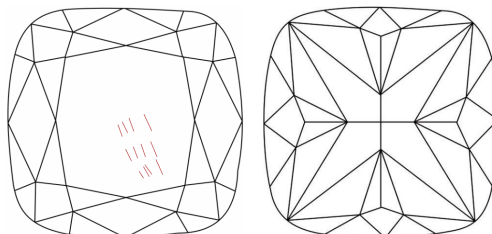
This Laboratory Grown Diamond was created by High Pressure High Temperature (HPHT) growth process.  
Type II

LG698513789  
Report verification at [igi.org](https://igi.org)

## PROPORTIONS

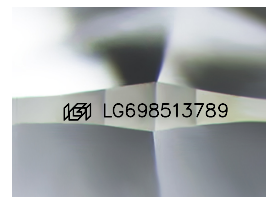


## CLARITY CHARACTERISTICS



## KEY TO SYMBOLS

Red symbols indicate internal characteristics.  
Green symbols indicate external characteristics.



Sample Image Used

**COLOR**

D E F G H I J Faint Very Light Light

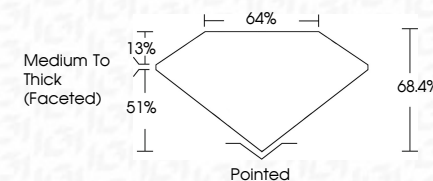
## CLARITY

| IF                  | VS <sup>1-2</sup>           | VS <sup>1-2</sup>      | SI <sup>1-2</sup> | I <sup>1-3</sup> |
|---------------------|-----------------------------|------------------------|-------------------|------------------|
| Internally Flawless | Very Very Slightly Included | Very Slightly Included | Slightly Included | Included         |

## LABORATORY GROWN DIAMOND REPORT



|                         |                                      |
|-------------------------|--------------------------------------|
| April 18, 2025          |                                      |
| IGI Report Number       | LG698513789                          |
| Description             | LABORATORY GROWN DIAMOND             |
| Shape and Cutting Style | SQUARE CUSHION MODIFIED<br>BRILLIANT |
| Measurements            | 6.75 X 6.73 X 4.60 MM                |
| GRADING RESULTS         |                                      |
| Carat Weight            | 1.65 CARAT                           |
| Color Grade             | D                                    |
| Clarity Grade           | VS 1                                 |



### ADDITIONAL GRADING INFORMATION

|  |   |
|--|---|
| Polish   | EXCELLENT   |
| Symmetry   | EXCELLENT   |
| Fluorescence   | NONE  |
| Inscription(s)   |  LG698513789 |
| Comments: As Grown - No indication of post-growth treatment.                                       |   |
| This Laboratory Grown Diamond was created by High Pressure High Temperature (HPHT) growth process. |   |
| Type II  |   |



© IGI 2020, International Gemological Institute

FD - 10 20



THIS DOCUMENT WAS PRODUCED WITH THE FOLLOWING SECURITY MEASURES: SPECIAL DOCUMENT PAPER, INK SCREENS, WATERMARK BACKGROUND DESIGNS, HOLOGRAM AND OTHER SECURITY FEATURES NOT LISTED AND DO EXCEED DOCUMENT SECURITY INDUSTRY GUIDELINES

**www.igi.org**

|                                  |                          |            |                           |           |      |
|----------------------------------|--------------------------|------------|---------------------------|-----------|------|
| April 18, 2025                   | GI Report No LG698513799 | 1.65 CARAT | Vs1                       | Pointed   | None |
| SQARE CUSHION MODIFIED BRILLIANT |                          |            | 68.4%                     | EXCELLENT |      |
|                                  |                          |            | 64%                       | EXCELLENT |      |
|                                  |                          |            | Medium to Thick (Faceted) | NONE      |      |
| 5.75 x 5.75 x 4.60 MM            |                          |            |                           |           |      |
| Carat Weight                     |                          |            |                           |           |      |
| Color Grade                      |                          |            |                           |           |      |
| Clarity Grade                    |                          |            |                           |           |      |
| Depth                            |                          |            |                           |           |      |
| Table                            |                          |            |                           |           |      |
| Girdle                           |                          |            |                           |           |      |
| Culet                            |                          |            |                           |           |      |
| Polish                           |                          |            |                           |           |      |
| Symmetry                         |                          |            |                           |           |      |
| Fluorescence                     |                          |            |                           |           |      |
|                                  |                          |            |                           |           |      |

**Comments:**  
As Grown - No indication of post-growth treatment.  
This Laboratory Grown Diamond was created by High Pressure High Temperature (HPHT) growth process.