



ELECTRONIC COPY

LABORATORY GROWN DIAMOND REPORT

April 24, 2025
IGI Report Number LG698519201
Description LABORATORY GROWN DIAMOND
Shape and Cutting Style PRINCESS CUT
Measurements 7.88 X 7.80 X 5.68 MM

GRADING RESULTS

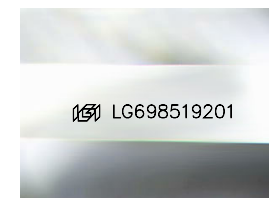
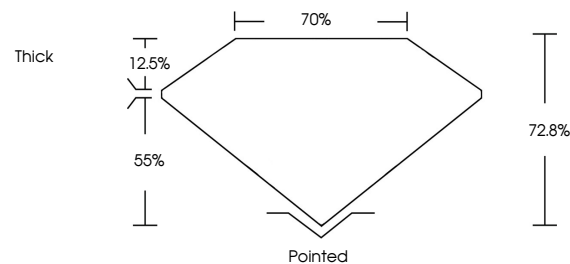
Carat Weight 3.24 CARATS
Color Grade D
Clarity Grade VS 1

ADDITIONAL GRADING INFORMATION

Polish EXCELLENT
Symmetry EXCELLENT
Fluorescence NONE
Inscription(s) IGI LG698519201

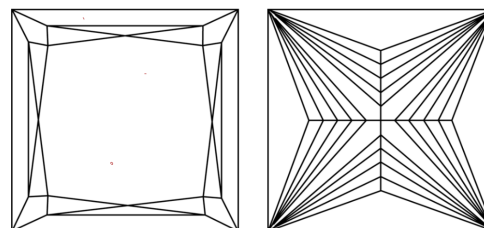
Comments: This Laboratory Grown Diamond was created by Chemical Vapor Deposition (CVD) growth process. Type IIa

PROPORTIONS



Sample Image Used

CLARITY CHARACTERISTICS



KEY TO SYMBOLS

Red symbols indicate internal characteristics.
Green symbols indicate external characteristics.

COLOR

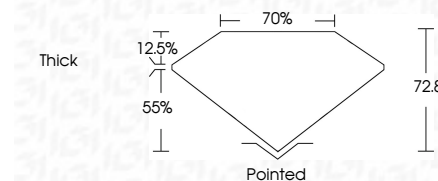
D E F G H I J Faint Very Light Light

CLARITY

IF WS¹⁻² VS¹⁻² SI¹⁻² I¹⁻³
Internally Flawless Very Very Slightly Included Very Slightly Included Slightly Included Included



April 24, 2025
IGI Report Number LG698519201
Description LABORATORY GROWN DIAMOND
Shape and Cutting Style PRINCESS CUT
Measurements 7.88 X 7.80 X 5.68 MM
GRADING RESULTS
Carat Weight 3.24 CARATS
Color Grade D
Clarity Grade VS 1



ADDITIONAL GRADING INFORMATION

Polish EXCELLENT
Symmetry EXCELLENT
Fluorescence NONE
Inscription(s) IGI LG698519201
Comments: This Laboratory Grown Diamond was created by Chemical Vapor Deposition (CVD) growth process. Type IIa



IGI



April 24, 2025
IGI Report No. LG698519201
PRINCESS CUT
7.88 X 7.80 X 5.68 MM
3.24 CARATS
D
Color Grade
VS 1
Clarity Grade
72.0%
70%
Thick
Pointed
EXCELLENT
EXCELLENT
NONE
IGI LG698519201
Comments: This Laboratory Grown Diamond was created by Chemical Vapor Deposition (CVD) growth process. Type IIa