



ELECTRONIC COPY

LG698539421
Report verification at igi.org



May 6, 2025

IGI Report Number **LG698539421**

Description **LABORATORY GROWN DIAMOND**

Shape and Cutting Style **CUSHION BRILLIANT**

Measurements **7.87 X 5.83 X 3.98 MM**

GRADING RESULTS

Carat Weight **1.51 CARAT**

Color Grade **FANCY VIVID PINK**

Clarity Grade **VS 2**

May 6, 2025

IGI Report Number **LG698539421**

Description **LABORATORY GROWN DIAMOND**

Shape and Cutting Style **CUSHION BRILLIANT**

Measurements **7.87 X 5.83 X 3.98 MM**

GRADING RESULTS

Carat Weight **1.51 CARAT**

Color Grade **FANCY VIVID PINK**

Clarity Grade **VS 2**

ADDITIONAL GRADING INFORMATION

Polish **VERY GOOD**

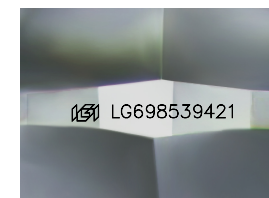
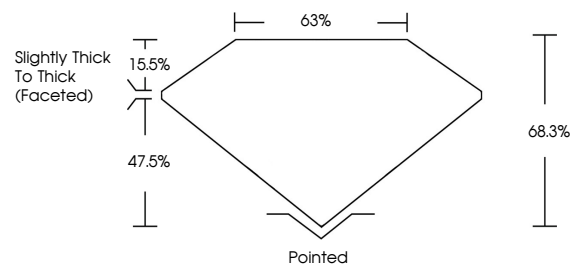
Symmetry **EXCELLENT**

Fluorescence **STRONG**

Inscription(s) **LG698539421**

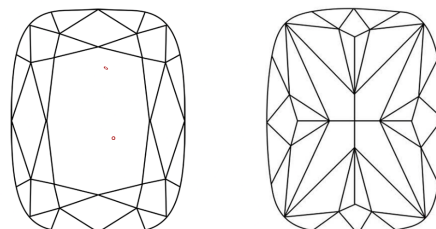
Comments: This Laboratory Grown Diamond was created by Chemical Vapor Deposition (CVD) growth process. Indications of post-growth treatment.

PROPORTIONS



Sample Image Used

CLARITY CHARACTERISTICS



KEY TO SYMBOLS

Red symbols indicate internal characteristics.
Green symbols indicate external characteristics.

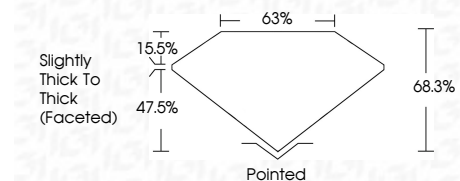
COLOR

D E F G H I J Faint Very Light Light

CLARITY

IF VS¹⁻² VS¹⁻² SI¹⁻² I¹⁻³

Internally Flawless Very Very Slightly Included Very Slightly Included Slightly Included Included



ADDITIONAL GRADING INFORMATION

Polish **VERY GOOD**

Symmetry **EXCELLENT**

Fluorescence **STRONG**

Inscription(s) **LG698539421**

Comments: This Laboratory Grown Diamond was created by Chemical Vapor Deposition (CVD) growth process. Indications of post-growth treatment.



IGI



May 6, 2025	1.51 CARAT
IGI Report No LG698539421	FANCY VIVID PINK
CUSHION BRILLIANT	VS 2
7.87 X 5.83 X 3.98 MM	68.3%
Carat Weight	63%
Color Grade	Slightly Thick To Thick (Faceted)
Clarity Grade	Pointed
Depth	VERY GOOD
Table	EXCELLENT
Grailes	STRONG
Culet	Inscription(s) LG698539421
Polish	
Symmetry	
Fluorescence	
Inscription(s)	

Comments: This Laboratory Grown Diamond was created by Chemical Vapor Deposition (CVD) growth process. Indications of post-growth treatment.