



# INTERNATIONAL GEMOLOGICAL INSTITUTE

ELECTRONIC COPY



April 18, 2025

**IGI Report Number** LG698588428  
**ROUND BRILLIANT**  
**LABORATORY GROWN DIAMOND**  
**4.87 - 4.89 X 3.09 MM**

**Carat Weight** 0.47 CARAT  
**Color Grade** E  
**Clarity Grade** VVS 2  
**Cut Grade** GOOD  
**Polish** GOOD  
**Symmetry** VERY GOOD  
**Fluorescence** NONE  
**Inscription(s)** IGI LG698588428

**Comments:** As Grown - No indication of post-growth treatment. This Laboratory Grown Diamond was created by High Pressure High Temperature (HPHT) growth process. Type II

## LABORATORY GROWN DIAMOND REPORT

April 18, 2025  
**IGI Report Number** LG698588428  
**Description** LABORATORY GROWN DIAMOND  
**Shape and Cutting Style** ROUND BRILLIANT  
**Measurements** 4.87 - 4.89 X 3.09 MM

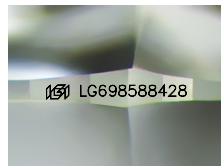
### GRADING RESULTS

**Carat Weight** 0.47 CARAT  
**Color Grade** E  
**Clarity Grade** VVS 2  
**Cut Grade** GOOD

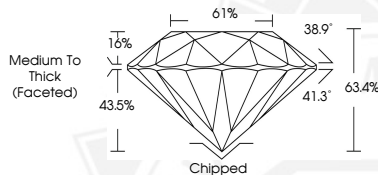
### ADDITIONAL GRADING INFORMATION

**Polish** GOOD  
**Symmetry** VERY GOOD  
**Fluorescence** NONE  
**Inscription(s)** IGI LG698588428

**Comments:** As Grown - No indication of post-growth treatment. This Laboratory Grown Diamond was created by High Pressure High Temperature (HPHT) growth process. Type II



Sample Image Used



April 18, 2025

**IGI Report Number** LG698588428  
**ROUND BRILLIANT**  
**LABORATORY GROWN DIAMOND**  
**4.87 - 4.89 X 3.09 MM**

**Carat Weight** 0.47 CARAT  
**Color Grade** E  
**Clarity Grade** VVS 2  
**Cut Grade** GOOD  
**Polish** GOOD  
**Symmetry** VERY GOOD  
**Fluorescence** NONE  
**Inscription(s)** IGI LG698588428

**Comments:** As Grown - No indication of post-growth treatment. This Laboratory Grown Diamond was created by High Pressure High Temperature (HPHT) growth process. Type II



THIS DOCUMENT WAS PRODUCED WITH THE FOLLOWING SECURITY MEASURES: SPECIAL DOCUMENT PAPER, INK SCREENS, WATERMARK, BACKGROUND DESIGN, HOLOGRAM AND OTHER SECURITY FEATURES NOT LISTED AND DO EXCEED DOCUMENT SECURITY INDUSTRY GUIDELINES.

For terms & conditions and to verify this report, please visit [www.igi.org](http://www.igi.org)