



ELECTRONIC COPY

LG700505648
Report verification at igi.org



May 9, 2025
IGI Report Number **LG700505648**
Description **LABORATORY GROWN DIAMOND**
Shape and Cutting Style **CUSHION MODIFIED BRILLIANT**
Measurements **11.91 X 7.75 X 4.87 MM**
GRADING RESULTS
Carat Weight **3.70 CARATS**
Color Grade **FANCY VIVID BLUE**
Clarity Grade **VS 2**

May 9, 2025
IGI Report Number **LG700505648**
Description **LABORATORY GROWN DIAMOND**
Shape and Cutting Style **CUSHION MODIFIED BRILLIANT**
Measurements **11.91 X 7.75 X 4.87 MM**

GRADING RESULTS

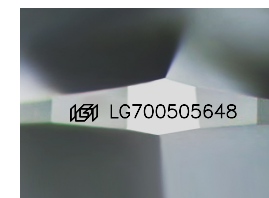
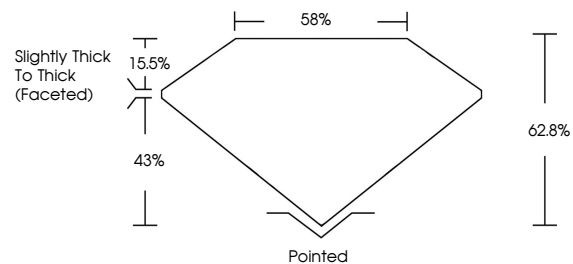
Carat Weight **3.70 CARATS**
Color Grade **FANCY VIVID BLUE**
Clarity Grade **VS 2**

ADDITIONAL GRADING INFORMATION

Polish **EXCELLENT**
Symmetry **EXCELLENT**
Fluorescence **NONE**
Inscription(s) **LG700505648**

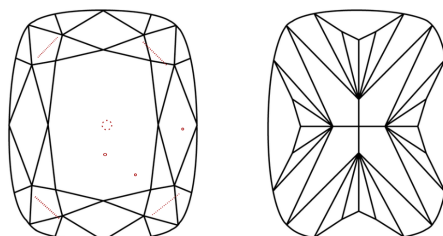
Comments: This Laboratory Grown Diamond was created by Chemical Vapor Deposition (CVD) growth process. Indications of post-growth treatment.

PROPORTIONS



Sample Image Used

CLARITY CHARACTERISTICS



KEY TO SYMBOLS

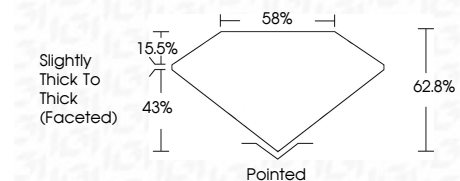
Red symbols indicate internal characteristics.
Green symbols indicate external characteristics.

COLOR

D E F G H I J Faint Very Light Light

CLARITY

IF	VS ¹⁻²	VS ¹⁻²	SI ¹⁻²	I ¹⁻³
Internally Flawless	Very Very Slightly Included	Very Slightly Included	Slightly Included	Included



ADDITIONAL GRADING INFORMATION

Polish **EXCELLENT**
Symmetry **EXCELLENT**
Fluorescence **NONE**
Inscription(s) **LG700505648**
Comments: This Laboratory Grown Diamond was created by Chemical Vapor Deposition (CVD) growth process. Indications of post-growth treatment.



May 9, 2025
IGI Report No **LG700505648**
CUSHION MODIFIED BRILLIANT
3.70 CARATS
Carat Weight **FANCY VIVID BLUE**
Color Grade **VS 2**
Depth **62.8%**
Table **58%**
Girdle **Slightly Thick To Thick (Faceted)**
Culet **Pointed**
Polish **EXCELLENT**
Symmetry **EXCELLENT**
Fluorescence **NONE**
Inscription(s) **LG700505648**
Comments: This Laboratory Grown Diamond was created by Chemical Vapor Deposition (CVD) growth process. Indications of post-growth treatment.