



ELECTRONIC COPY

LG700518507
Report verification at igi.org



October 7, 2025
IGI Report Number **LG700518507**
Description **LABORATORY GROWN DIAMOND**
Shape and Cutting Style **SQUARE CUSHION MODIFIED BRILLIANT**
Measurements **6.52 X 6.50 X 4.38 MM**
GRADING RESULTS
Carat Weight **1.77 CARAT**
Color Grade **FANCY INTENSE BLUE**
Clarity Grade **VS 2**

LABORATORY GROWN DIAMOND REPORT

October 7, 2025
IGI Report Number **LG700518507**
Description **LABORATORY GROWN DIAMOND**
Shape and Cutting Style **SQUARE CUSHION MODIFIED BRILLIANT**
Measurements **6.52 X 6.50 X 4.38 MM**

GRADING RESULTS

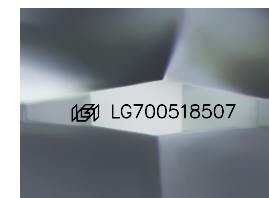
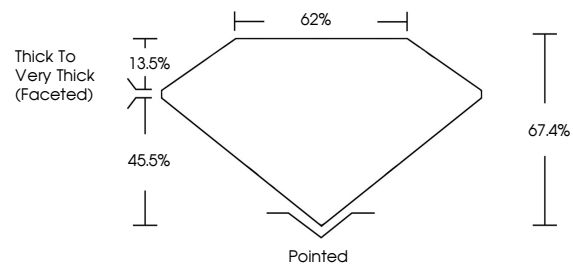
Carat Weight **1.77 CARAT**
Color Grade **FANCY INTENSE BLUE**
Clarity Grade **VS 2**

ADDITIONAL GRADING INFORMATION

Polish **EXCELLENT**
Symmetry **EXCELLENT**
Fluorescence **NONE**
Inscription(s) **IGI LG700518507**

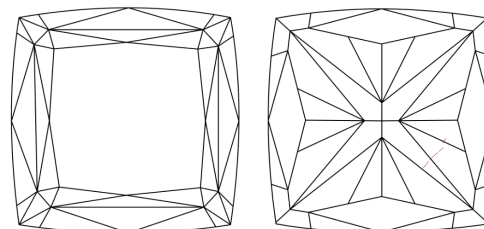
Comments: As Grown - No indication of post-growth treatment.
This Laboratory Grown Diamond was created by High Pressure High Temperature (HPHT) growth process.

PROPORTIONS



Sample Image Used

CLARITY CHARACTERISTICS



KEY TO SYMBOLS

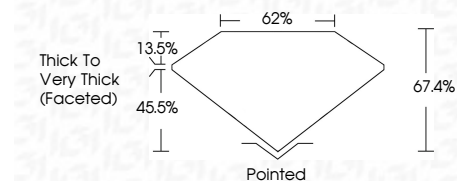
Red symbols indicate internal characteristics.
Green symbols indicate external characteristics.

COLOR

D E F G H I J Faint Very Light Light

CLARITY

FL	IF	VS ¹⁻²	VS ¹⁻²	SI ¹⁻²	I ¹⁻³
Flawless	Internally Flawless	Very Very Slightly Included	Very Slightly Included	Slightly Included	Included



ADDITIONAL GRADING INFORMATION

Polish **EXCELLENT**
Symmetry **EXCELLENT**
Fluorescence **NONE**
Inscription(s) **IGI LG700518507**
Comments: As Grown - No indication of post-growth treatment.
This Laboratory Grown Diamond was created by High Pressure High Temperature (HPHT) growth process.



IGI



October 7, 2025
IGI Report No LG700518507
SQUARE CUSHION MODIFIED BRILLIANT
6.52 X 6.50 X 4.38 MM
1.77 CARAT
FANCY INTENSE BLUE
VS 2
67.4%
62%
Thick to Very Thick (Faceted)
Pointed
EXCELLENT
EXCELLENT
NONE
IGI LG700518507
Comments: As Grown - No indication of post-growth treatment.
This Laboratory Grown Diamond was created by High Pressure High Temperature (HPHT) growth process.