



ELECTRONIC COPY

LG700526435
Report verification at igi.org



May 7, 2025

IGI Report Number **LG700526435**

Description **LABORATORY GROWN DIAMOND**

Shape and Cutting Style **CUSHION BRILLIANT**

Measurements **7.82 X 5.18 X 3.34 MM**

GRADING RESULTS

Carat Weight **1.07 CARAT**

Color Grade **FANCY VIVID BLUE**

Clarity Grade **VS 2**

LABORATORY GROWN DIAMOND REPORT

May 7, 2025

IGI Report Number **LG700526435**

Description **LABORATORY GROWN DIAMOND**

Shape and Cutting Style **CUSHION BRILLIANT**

Measurements **7.82 X 5.18 X 3.34 MM**

GRADING RESULTS

Carat Weight **1.07 CARAT**

Color Grade **FANCY VIVID BLUE**

Clarity Grade **VS 2**

ADDITIONAL GRADING INFORMATION

Polish **EXCELLENT**

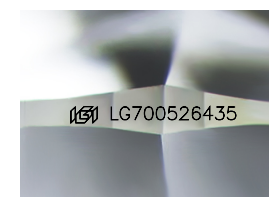
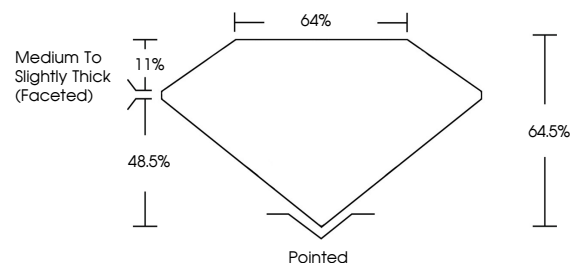
Symmetry **EXCELLENT**

Fluorescence **NONE**

Inscription(s) **LG700526435**

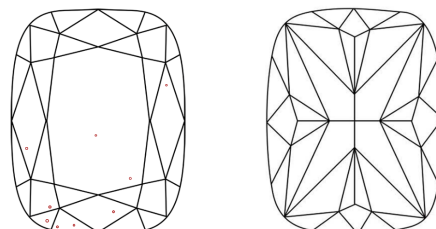
Comments: This Laboratory Grown Diamond was created by Chemical Vapor Deposition (CVD) growth process. Indications of post-growth treatment.

PROPORTIONS



Sample Image Used

CLARITY CHARACTERISTICS



KEY TO SYMBOLS

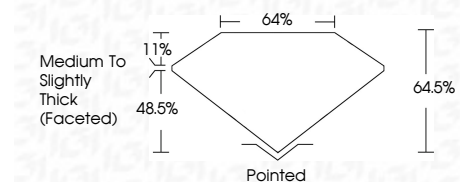
Red symbols indicate internal characteristics.
Green symbols indicate external characteristics.

COLOR

D E F G H I J Faint Very Light Light

CLARITY

IF	VS ¹⁻²	VS ¹⁻²	SI ¹⁻²	I ¹⁻³
Internally Flawless	Very Very Slightly Included	Very Slightly Included	Slightly Included	Included



ADDITIONAL GRADING INFORMATION

Polish **EXCELLENT**

Symmetry **EXCELLENT**

Fluorescence **NONE**

Inscription(s) **LG700526435**

Comments: This Laboratory Grown Diamond was created by Chemical Vapor Deposition (CVD) growth process. Indications of post-growth treatment.



May 7, 2025
IGI Report No LG700526435
CUSHION BRILLIANT

1.07 CARAT
FANCY VIVID BLUE
VS 2

7.82 X 5.18 X 3.34 MM
Color Grade
Clarity Grade
Table 11%
Depth 48.5%
Width 64%
Height 64.5%
Medium to Slightly Thick (Faceted)

Pointed
EXCELLENT
EXCELLENT
NONE
IGI LG700526435

Comments: This Laboratory Grown Diamond was created by Chemical Vapor Deposition (CVD) growth process. Indications of post-growth treatment.