



ELECTRONIC COPY

LG700532415
Report verification at igi.org



May 2, 2025
IGI Report Number LG700532415
Description LABORATORY GROWN DIAMOND
Shape and Cutting Style ROUND BRILLIANT
Measurements 7.17 - 7.21 X 4.21 MM
GRADING RESULTS
Carat Weight 1.33 CARAT
Color Grade F
Clarity Grade VS 2
Cut Grade EXCELLENT

May 2, 2025
IGI Report Number LG700532415
Description LABORATORY GROWN DIAMOND
Shape and Cutting Style ROUND BRILLIANT
Measurements 7.17 - 7.21 X 4.21 MM

GRADING RESULTS

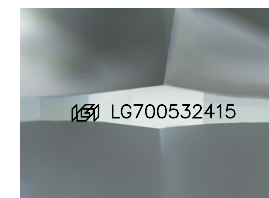
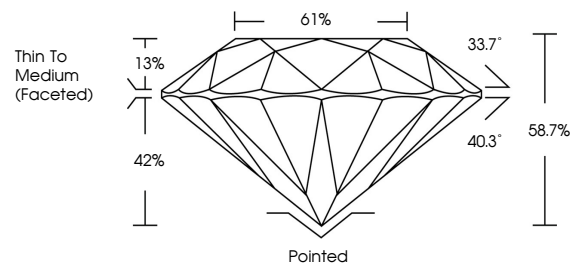
Carat Weight 1.33 CARAT
Color Grade F
Clarity Grade VS 2
Cut Grade EXCELLENT

ADDITIONAL GRADING INFORMATION

Polish EXCELLENT
Symmetry EXCELLENT
Fluorescence NONE
Inscription(s) LG700532415

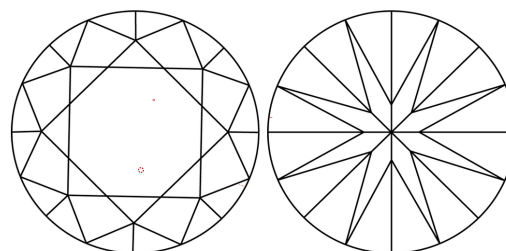
Comments: This Laboratory Grown Diamond was created by Chemical Vapor Deposition (CVD) growth process. Type IIa

PROPORTIONS



Sample Image Used

CLARITY CHARACTERISTICS



KEY TO SYMBOLS

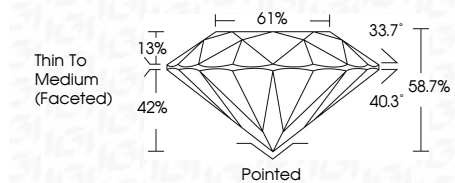
Red symbols indicate internal characteristics.
Green symbols indicate external characteristics.

COLOR

D E F G H I J Faint Very Light Light

CLARITY

IF WS 1-2 VS 1-2 SI 1-2 I 1-3
Internally Flawless Very Very Slightly Included Very Slightly Included Slightly Included Included



ADDITIONAL GRADING INFORMATION

Polish EXCELLENT
Symmetry EXCELLENT
Fluorescence NONE
Inscription(s) LG700532415
Comments: This Laboratory Grown Diamond was created by Chemical Vapor Deposition (CVD) growth process. Type IIa



May 2, 2025
IGI Report No LG700532415
ROUND BRILLIANT
7.17 - 7.21 X 4.21 MM
1.33 CARAT
Color Grade F
Clarity Grade VS 2
Depth 68.7%
Table 61%
Thin To Medium (Faceted)
Cutler Pointed
Polish EXCELLENT
Symmetry EXCELLENT
Fluorescence NONE
Inscriptions(s) LG700532415
Comments: This Laboratory Grown Diamond was created by Chemical Vapor Deposition (CVD) growth process. Type IIa