



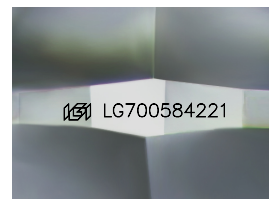
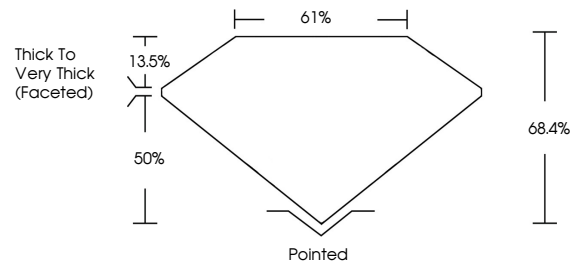
**INTERNATIONAL  
GEMOLOGICAL  
INSTITUTE**

**ELECTRONIC COPY**

## LABORATORY GROWN DIAMOND REPORT

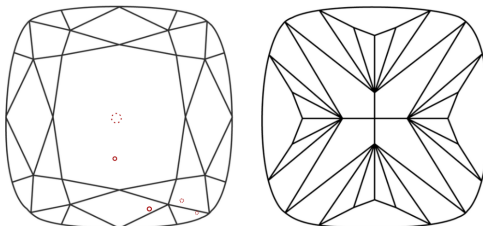
LG700584221  
Report verification at [igi.org](https://igi.org)

## PROPORTIONS



Sample Image Used

## CLARITY CHARACTERISTICS



## KEY TO SYMBOLS

Red symbols indicate internal characteristics.  
Green symbols indicate external characteristics.

**COLOR**

D E F G H I J Faint Very Light Light

## CLARITY

IF                      WS<sup>1-2</sup>                      VS<sup>1-2</sup>                      SI<sup>1-2</sup>                      I<sup>1-3</sup>

Internally Flawless	Very Very Slightly Included	Very Slightly Included	Slightly Included	Included
------------------------	--------------------------------	---------------------------	----------------------	----------



April 24, 2025

IGI Report Number **LG700584221**

Description	LABORATORY GROWN DIAMOND
-------------	--------------------------

Shape and Cutting Style **SQUARE CUSHION MODIFIED  
BRILLIANT**

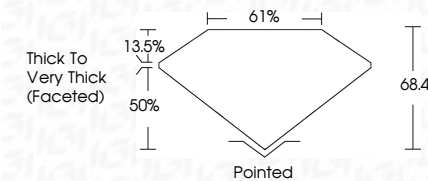
Measurements **9.17 X 8.99 X 6.15 MM**

## GRADING RESULTS

Carat Weight **4.02 CARATS**

Color Grade	G
-------------	---

Clarity Grade VS 2



### ADDITIONAL GRADING INFORMATION

Polish **EXCELLENT**Symmetry **EXCELLENT**Fluorescence **NONE**Inscription(s)  LG700584221

Comments: This Laboratory Grown Diamond was created by Chemical Vapor Deposition (CVD) growth process.  
Type IIa



IG



© IGI 2020, International Gemological Institute

FD - 10 20

**www.igi.org**

THIS DOCUMENT WAS PRODUCED WITH THE FOLLOWING SECURITY MEASURES: SPECIAL DOCUMENT PAPER, INK SCREENS, WATERMARK, BACKGROUND DESIGNS, HOLOGRAM AND OTHER SECURITY FEATURES NOT LISTED AND DO EXCEED DOCUMENT SECURITY INDUSTRY GUIDELINES

April 24, 2025	GI Report No LG700594221	SQUARE CUSHION MODIFIED BRILLIANT
1.17 X 8.99 X 6.15 MM	Color Weight	4.02 CARATS
	Color Grade	G
	Clarity Grade	VS 2
	Depth	68.0%
	Table	61%
	Girdle	Thick To Very Thick (Faceted)
	Fluor	Polished
	Polish	EXCELLENT
	Symmetry	EXCELLENT
	Fluor essence	NONE
	Inscriptions(s)	689 LG700594221
Comments: Very Heavy Growth Diamond was created by Chemical Vapor Deposition (CVD) growth process. Type IIA		