



**ELECTRONIC COPY**

LG701505248  
Report verification at igi.org



April 23, 2025

IGI Report Number **LG701505248**

Description **LABORATORY GROWN DIAMOND**

Shape and Cutting Style **ROUND BRILLIANT**

Measurements **8.68 - 8.73 X 5.42 MM**

**GRADING RESULTS**

Carat Weight **2.53 CARATS**

Color Grade **D**

Clarity Grade **VS 2**

Cut Grade **IDEAL**

April 23, 2025  
IGI Report Number **LG701505248**  
Description **LABORATORY GROWN DIAMOND**  
Shape and Cutting Style **ROUND BRILLIANT**  
Measurements **8.68 - 8.73 X 5.42 MM**

**GRADING RESULTS**

Carat Weight **2.53 CARATS**

Color Grade **D**

Clarity Grade **VS 2**

Cut Grade **IDEAL**

**ADDITIONAL GRADING INFORMATION**

Polish **EXCELLENT**

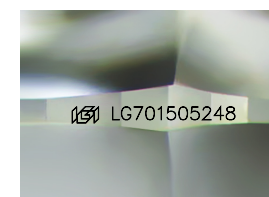
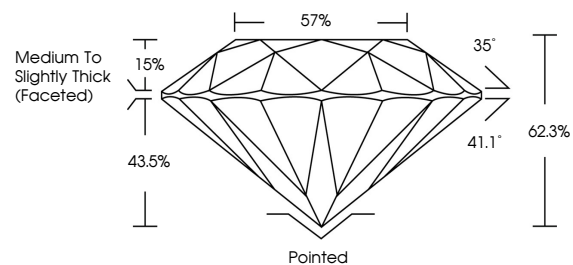
Symmetry **EXCELLENT**

Fluorescence **NONE**

Inscription(s) **LG701505248**

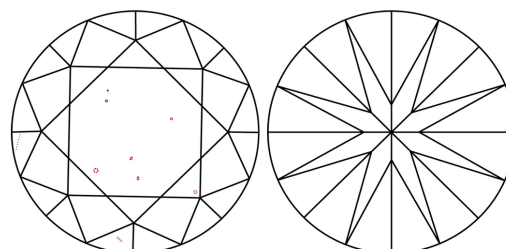
Comments: HEARTS & ARROWS  
This Laboratory Grown Diamond was created by  
Chemical Vapor Deposition (CVD) growth process.  
Type IIa

**PROPORTIONS**



Sample Image Used

**CLARITY CHARACTERISTICS**



**KEY TO SYMBOLS**

Red symbols indicate internal characteristics.  
Green symbols indicate external characteristics.



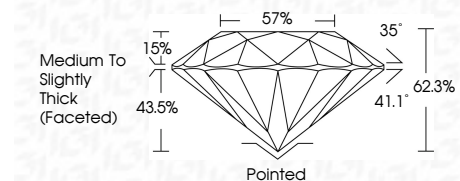
**COLOR**

D E F G H I J Faint Very Light Light

**CLARITY**

IF VS<sup>1-2</sup> VS<sup>1-2</sup> SI<sup>1-2</sup> I<sup>1-3</sup>

Internally Flawless Very Very Slightly Included Very Slightly Included Slightly Included Included



**ADDITIONAL GRADING INFORMATION**

Polish **EXCELLENT**

Symmetry **EXCELLENT**

Fluorescence **NONE**

Inscription(s) **LG701505248**

Comments: HEARTS & ARROWS  
This Laboratory Grown Diamond was created by  
Chemical Vapor Deposition (CVD) growth process.  
Type IIa



April 23, 2025	IGI Report No LG701505248	2.53 CARATS	D	VS 2	IDEAL	62.3%	35°	Pointed	EXCELLENT	EXCELLENT	NONE	LG701505248
ROUND BRILLIANT	8.68 - 8.73 X 5.42 MM	Color Grade	Cut Grade	Depth	Table	Girdle	Medium To Slightly Thick (Faceted)	Polish	Symmetry	Fluorescence	Inscription(s)	Comments: HEARTS & ARROWS This Laboratory Grown Diamond was created by Chemical Vapor Deposition (CVD) growth process. Type IIa