



ELECTRONIC COPY

LG701505367
Report verification at igi.org



April 24, 2025

IGI Report Number **LG701505367**

Description **LABORATORY GROWN DIAMOND**

Shape and Cutting Style **SQUARE CUSHION MODIFIED
BRILLIANT**

Measurements **8.18 X 8.01 X 5.25 MM**

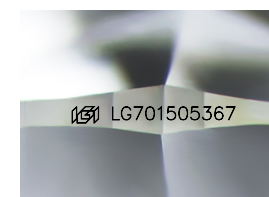
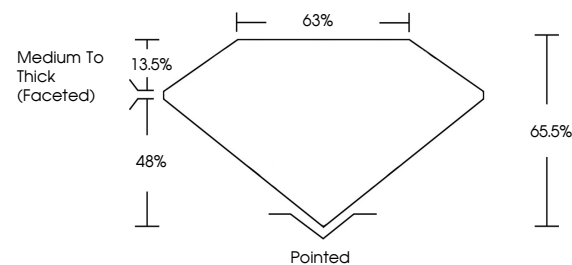
GRADING RESULTS

Carat Weight **2.70 CARATS**

Color Grade **E**

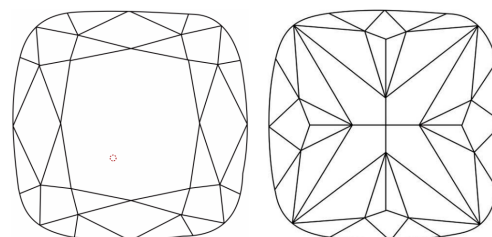
Clarity Grade **VS 1**

PROPORTIONS



Sample Image Used

CLARITY CHARACTERISTICS



KEY TO SYMBOLS

Red symbols indicate internal characteristics.
Green symbols indicate external characteristics.

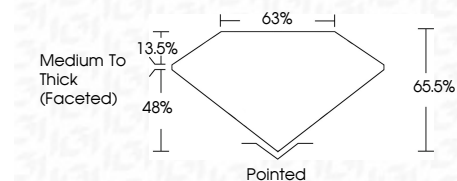
COLOR

D E F G H I J Faint Very Light Light

CLARITY

IF WS¹⁻² VS¹⁻² SI¹⁻² I¹⁻³

Internally Flawless Very Very Slightly Included Very Slightly Included Slightly Included Included



ADDITIONAL GRADING INFORMATION

Polish **EXCELLENT**

Symmetry **EXCELLENT**

Fluorescence **NONE**

Inscription(s) **IGI LG701505367**

Comments: This Laboratory Grown Diamond was created by Chemical Vapor Deposition (CVD) growth process. Type IIa



IGI



April 24, 2025
IGI Report No LG701505367
SQUARE CUSHION MODIFIED BRILLIANT
8.18 X 8.01 X 5.25 MM
2.70 CARATS
E
VS 1
65.5%
48%
63%
Medium To Thick (Faceted)
Pointed
EXCELLENT
EXCELLENT
NONE
IGI LG701505367

Comments: This Laboratory Grown Diamond was created by Chemical Vapor Deposition (CVD) growth process. Type IIa