



ELECTRONIC COPY

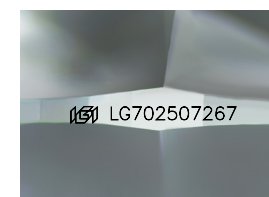
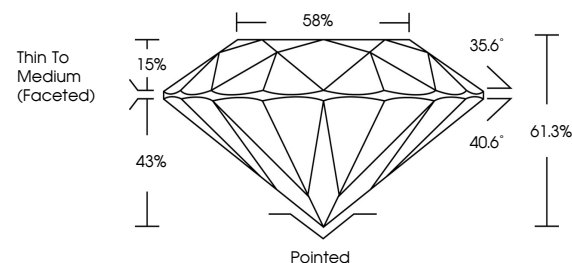
LG702507267 Report verification at igi.org



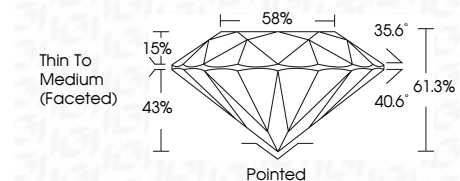
April 30, 2025 IGI Report Number LG702507267 Description LABORATORY GROWN DIAMOND Shape and Cutting Style ROUND BRILLIANT Measurements 7.14 - 7.23 X 4.39 MM GRADING RESULTS Carat Weight 1.38 CARAT Color Grade G Clarity Grade VVS 2 Cut Grade IDEAL

April 30, 2025 IGI Report Number LG702507267 Description LABORATORY GROWN DIAMOND Shape and Cutting Style ROUND BRILLIANT Measurements 7.14 - 7.23 X 4.39 MM

PROPORTIONS



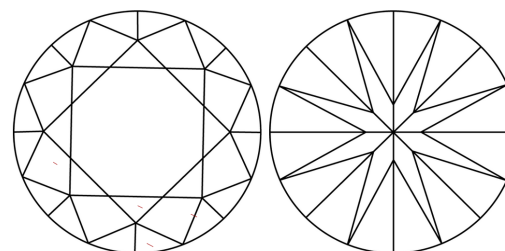
Sample Image Used



GRADING RESULTS

Carat Weight 1.38 CARAT Color Grade G Clarity Grade VVS 2 Cut Grade IDEAL

CLARITY CHARACTERISTICS



KEY TO SYMBOLS

Red symbols indicate internal characteristics. Green symbols indicate external characteristics.

COLOR

D E F G H I J Faint Very Light Light

CLARITY

IF WS 1-2 VS 1-2 SI 1-2 I 1-3 Internally Flawless Very Very Slightly Included Very Slightly Included Slightly Included Included

ADDITIONAL GRADING INFORMATION

Polish EXCELLENT Symmetry EXCELLENT Fluorescence NONE Inscription(s) LG702507267 Comments: As Grown - No indication of post-growth treatment. This Laboratory Grown Diamond was created by High Pressure High Temperature (HPHT) growth process. Type II

ADDITIONAL GRADING INFORMATION

Polish EXCELLENT Symmetry EXCELLENT Fluorescence NONE Inscription(s) LG702507267

Comments: As Grown - No indication of post-growth treatment. This Laboratory Grown Diamond was created by High Pressure High Temperature (HPHT) growth process. Type II



April 30, 2025 IGI Report No LG702507267 ROUND BRILLIANT 1.38 CARAT G VVS 2 IDEAL 61.3% 58% Thin To Medium (Faceted) Pointed EXCELLENT EXCELLENT NONE LG702507267 Comments: As Grown - No indication of post-growth treatment. This Laboratory Grown Diamond was created by High Pressure High Temperature (HPHT) growth process. Type II