



**ELECTRONIC COPY**

LG702513782  
Report verification at igi.org

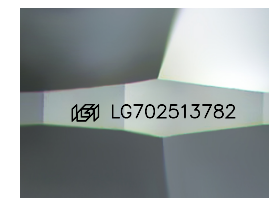


April 25, 2025  
IGI Report Number **LG702513782**  
Description **LABORATORY GROWN DIAMOND**  
Shape and Cutting Style **SQUARE CUSHION MODIFIED BRILLIANT**

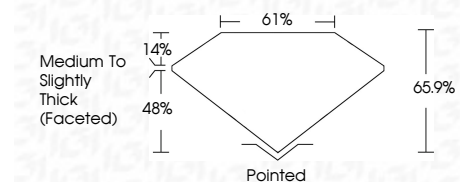
Measurements **5.92 X 5.87 X 3.87 MM**

**GRADING RESULTS**

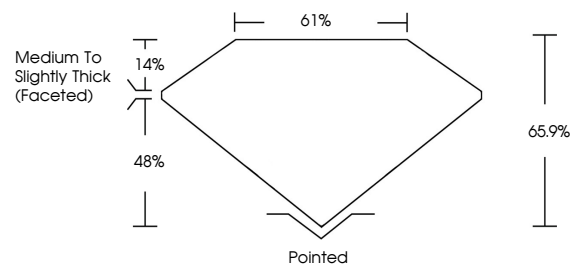
Carat Weight **1.04 CARAT**  
Color Grade **D**  
Clarity Grade **VS 2**



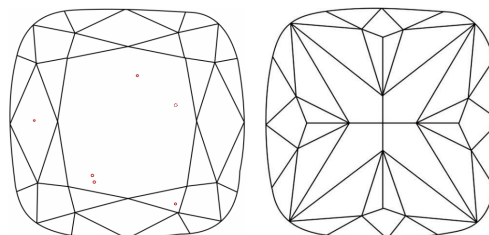
Sample Image Used



**PROPORTIONS**



**CLARITY CHARACTERISTICS**



**KEY TO SYMBOLS**

Red symbols indicate internal characteristics.  
Green symbols indicate external characteristics.

**COLOR**

D E F G H I J Faint Very Light Light

**CLARITY**

IF	VS <sup>1-2</sup>	VS <sup>1-2</sup>	SI <sup>1-2</sup>	I <sup>1-3</sup>
Internally Flawless	Very Very Slightly Included	Very Slightly Included	Slightly Included	Included

**ADDITIONAL GRADING INFORMATION**

Polish **EXCELLENT**  
Symmetry **EXCELLENT**  
Fluorescence **NONE**  
Inscription(s) **IGI LG702513782**  
Comments: This Laboratory Grown Diamond was created by Chemical Vapor Deposition (CVD) growth process. Type IIa



April 25, 2025  
IGI Report No LG702513782  
**SQUARE CUSHION MODIFIED BRILLIANT**  
5.92 X 5.87 X 3.87 MM  
1.04 CARAT  
D  
VS 2  
65.9%  
61%  
Medium to Slightly Thick (Faceted)  
Pointed  
EXCELLENT  
EXCELLENT  
NONE  
IGI LG702513782  
Comments: This Laboratory Grown Diamond was created by Chemical Vapor Deposition (CVD) growth process. Type IIa