



**ELECTRONIC COPY**

## LABORATORY GROWN DIAMOND REPORT

May 1, 2025	
IGI Report Number	LG702523790
Description	LABORATORY GROWN DIAMOND
Shape and Cutting Style	CUSHION MIXED CUT
Measurements	18.24 X 12.71 X 7.34 MM

## GRADING RESULTS

Carat Weight	16.03 CARATS
Color Grade	F
Clarity Grade	VS 1

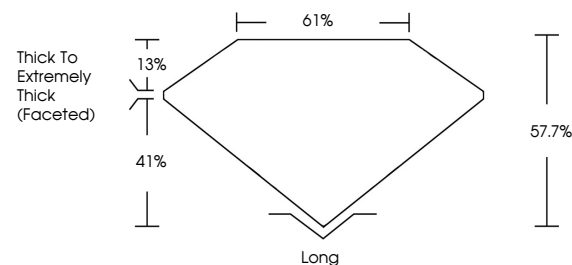
### ADDITIONAL GRADING INFORMATION

Polish	EXCELLENT
Symmetry	EXCELLENT
Fluorescence	NONE
Inscription(s)	LG702523790

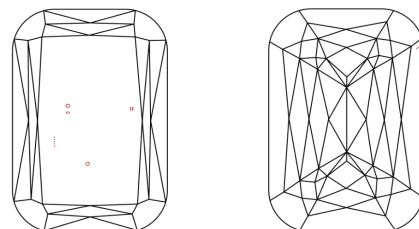
Comments: This Laboratory Grown Diamond was created by Chemical Vapor Deposition (CVD) growth process.  
Type IIa

LG702523790  
Report verification at [igi.org](https://igi.org)

## PROPORTIONS

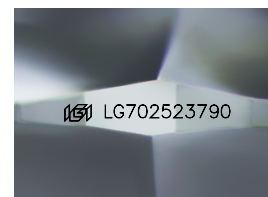


## CLARITY CHARACTERISTICS



### KEY TO SYMBOLS

Red symbols indicate internal characteristics.  
Green symbols indicate external characteristics.



Sample Image Used

## COLOR

D E F G H I J Faint Very Light Light

## CLARITY

IF      VWS<sup>1-2</sup>      VS<sup>1-2</sup>      SI<sup>1-2</sup>      I<sup>1-3</sup>

Internally Flawless	Very Very Slightly Included	Very Slightly Included	Slightly Included	Included
---------------------	-----------------------------	------------------------	-------------------	----------

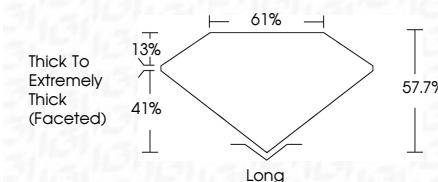
## LABORATORY GROWN DIAMOND REPORT



May 1, 2025	
IGI Report Number	LG702523790
Description	LABORATORY GROWN DIAMOND
Shape and Cutting Style	CUSHION MIXED CUT
Measurements	18.24 X 12.71 X 7.34 MM
GRADING RESULTS	
Carat Weight	16.03 CARATS
Color Grade	F
Clarity Grade	VS 1

### ADDITIONAL GRADING INFORMATION

Polish	EXCELLENT
Symmetry	EXCELLENT
Fluorescence	NONE
Inscription(s)	 LG702523790
<p>Comments: This Laboratory Grown Diamond was created by Chemical Vapor Deposition (CVD) growth process.</p> <p>Type IIa</p>	



© IGI 2020, International Gemological Institute

FD - 10 20



THIS DOCUMENT WAS PRODUCED WITH THE FOLLOWING SECURITY MEASURES: SPECIAL DOCUMENT PAPER, INK SCREENS, WATERMARK, BACKGROUND DESIGNS, HOLOGRAM AND OTHER SECURITY FEATURES NOT LISTED AND DO EXCEED DOCUMENT SECURITY INDUSTRY GUIDELINES

**www.igi.org**

