



ELECTRONIC COPY

LG702524613
Report verification at igi.org



April 26, 2025

IGI Report Number **LG702524613**

Description **LABORATORY GROWN DIAMOND**

Shape and Cutting Style **PRINCESS CUT**

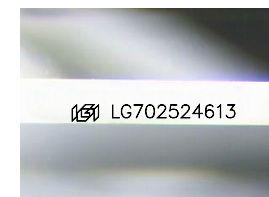
Measurements **10.00 X 9.96 X 7.24 MM**

GRADING RESULTS

Carat Weight **6.10 CARATS**

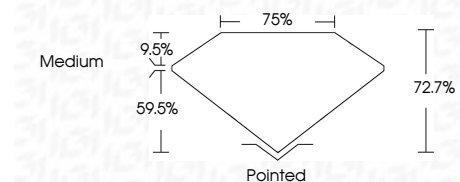
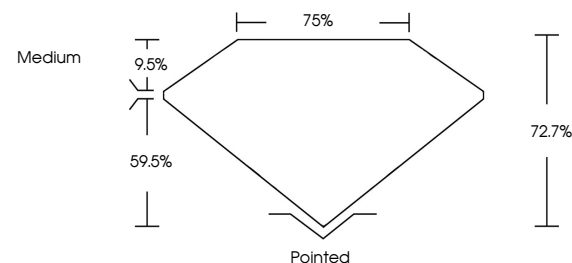
Color Grade **F**

Clarity Grade **VVS 2**

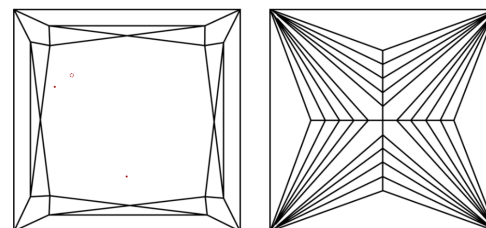


Sample Image Used

PROPORTIONS



CLARITY CHARACTERISTICS



KEY TO SYMBOLS

Red symbols indicate internal characteristics.
Green symbols indicate external characteristics.

COLOR

D E F G H I J Faint Very Light Light

CLARITY

IF	VS ¹⁻²	VS ¹⁻²	SI ¹⁻²	I ¹⁻³
Internally Flawless	Very Very Slightly Included	Very Slightly Included	Slightly Included	Included

ADDITIONAL GRADING INFORMATION

Polish **EXCELLENT**

Symmetry **EXCELLENT**

Fluorescence **NONE**

Inscription(s) **IGI LG702524613**

Comments: This Laboratory Grown Diamond was created by Chemical Vapor Deposition (CVD) growth process.
Type IIa



IGI



April 26, 2025
IGI Report No. LG702524613
PRINCESS CUT
10.00 X 9.96 X 7.24 MM
6.10 CARATS
F
VVS 2
72.7%
75%
Medium
Pointed
EXCELLENT
EXCELLENT
NONE
IGI LG702524613

Comments: This Laboratory Grown Diamond was created by Chemical Vapor Deposition (CVD) growth process.
Type IIa