

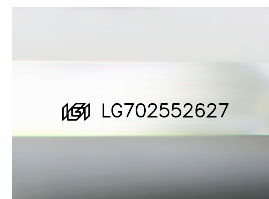
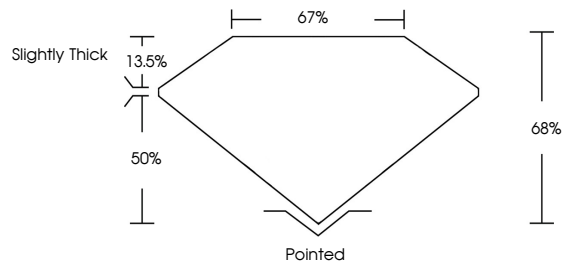


**INTERNATIONAL
GEMOLOGICAL
INSTITUTE**

ELECTRONIC COPY

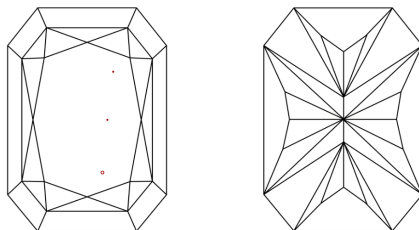
LG702552627
Report verification at igi.org

PROPORTIONS



Sample Image Used

CLARITY CHARACTERISTICS



KEY TO SYMBOLS

Red symbols indicate internal characteristics.
Green symbols indicate external characteristics.

COLOR

D E F G H I J Faint Very Light Light

CLARITY

IF	WS ¹⁻²	VS ¹⁻²	SI ¹⁻²	I ¹⁻³
----	-------------------	-------------------	-------------------	------------------

Internally Flawless	Very Very Slightly Included	Very Slightly Included	Slightly Included	Included
------------------------	--------------------------------	---------------------------	----------------------	----------



May 1, 2025

IGI Report Number **LG702552627**

Description	LABORATORY GROWN DIAMOND
-------------	--------------------------

Shape and Cutting Style

CUT CORNERED
RECTANGULAR MODIFIED
BRILLIANT

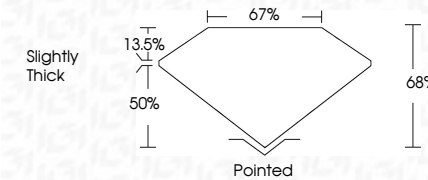
Measurements 12.84 X 8.88 X 6.04 MM

GRADING RESULTS

Carat Weight **6.09 CARATS**

Color Grade D

Clarity Grade VS 1



ADDITIONAL GRADING INFORMATION

Polish **EXCELLENT**Symmetry **EXCELLENT**Fluorescence **NONE**Inscription(s) LG702552627

Comments: This Laboratory Grown Diamond was created by Chemical Vapor Deposition (CVD) growth process.
Type IIa



IG



© IGI 2020, International Gemological Institute

FD - 10 20

www.igi.org

THIS DOCUMENT WAS PRODUCED WITH THE FOLLOWING SECURITY MEASURES: SPECIAL DOCUMENT PAPER, INK SCREENS, WATERMARK, BACKGROUND DESIGNS, HOLOGRAM AND OTHER SECURITY FEATURES NOT LISTED AND DO EXCEED DOCUMENT SECURITY INDUSTRY GUIDELINES

May 1, 2025	GI Report No. L570259267	CUT CORNERED RECT. MODIFIED BRILLIANT	6.00 CARATS	Vs I	Polished	Comments: This is a Natural Crown Diamond was created by Chemical Vapor Deposition (CVD) growth process. Type IIa
			6.00 CARATS	68%	EXCELLENT	
				67%	EXCELLENT	
				Slightly Thick	NONE	
					gsm L570259267	
	12.84 X 8.88 X 6.04 MM					
	Carat Weight					
	Color Grade					
	Clarity Grade					
	Depth					
	Table					
	Girdle					
	Fluorescence					
	Symmetry					
	Inscription(s)					
	Quiet					
	Polish					