



**Light Performance Grade: Exceptional**



April 28, 2025  
IGI Report Number **LG702578851**  
Description **LABORATORY GROWN DIAMOND**  
Shape and Cutting Style **ROUND BRILLIANT**  
Measurements **11.13 - 11.17 X 6.56 MM**  
**GRADING RESULTS**  
Carat Weight **5.01 CARATS**  
Color Grade **D**  
Clarity Grade **VVS 2**  
Cut Grade **IDEAL**

**ELECTRONIC COPY**

**LABORATORY GROWN DIAMOND REPORT**

April 28, 2025  
IGI Report Number **LG702578851**  
Description **LABORATORY GROWN DIAMOND**  
Shape and Cutting Style **ROUND BRILLIANT**  
Measurements **11.13 - 11.17 x 6.56 mm**

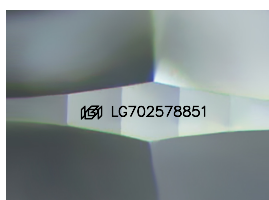
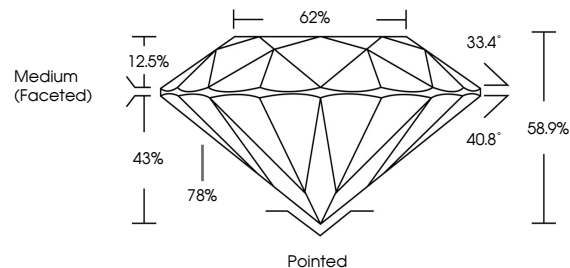
**GRADING RESULTS**

Carat Weight **5.01 CARATS**  
Color Grade **D**  
Clarity Grade **VVS 2**  
Cut Grade **IDEAL**

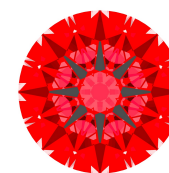
**ADDITIONAL GRADING INFORMATION**

Polish **EXCELLENT**  
Symmetry **EXCELLENT**  
Fluorescence **NONE**  
Inscription(s) **IGI LG702578851**  
Comments: This Laboratory Grown Diamond was created by Chemical Vapor Deposition (CVD) growth process.  
Type Ila

**PROPORTIONS**



Sample Image Used



Ideal-Scope representation

Low Moderate High Superior Exceptional

**Light Performance**

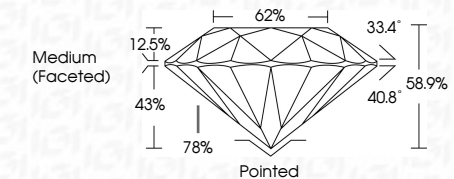


**COLOR**

D E F G H I J Faint Very Light Light

**CLARITY**

IF	VS <sup>1-2</sup>	VS <sup>1-2</sup>	SI <sup>1-2</sup>	I <sup>1-3</sup>
Internally Flawless	Very Very Slightly Included	Very Slightly Included	Slightly Included	Included



**ADDITIONAL GRADING INFORMATION**

Polish **EXCELLENT**  
Symmetry **EXCELLENT**  
Fluorescence **NONE**  
Inscription(s) **IGI LG702578851**  
Comments: This Laboratory Grown Diamond was created by Chemical Vapor Deposition (CVD) growth process.  
Type Ila



**IGI**



April 28, 2025	IGI Report No. LG702578851	ROUND BRILLIANT	11.13 - 11.17 X 6.56 MM	5.01 CARATS	D	VVS 2	IDEAL	58.9%	62%	Medium (Faceted)	Pointed	EXCELLENT	EXCELLENT	NONE	IGI LG702578851
Comments: This Laboratory Grown Diamond was created by Chemical Vapor Deposition (CVD) growth process. Type Ila															