



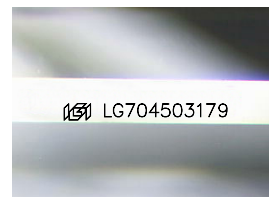
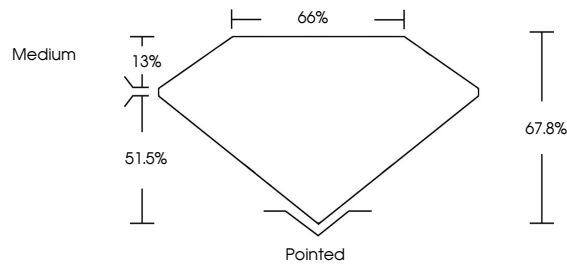
**INTERNATIONAL
GEMOLOGICAL
INSTITUTE**

ELECTRONIC COPY

LABORATORY GROWN DIAMOND REPORT

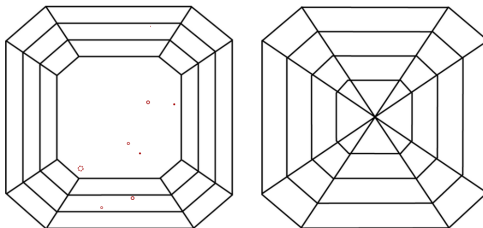
LG704503179
Report verification at igi.org

PROPORTIONS



Sample Image Used

CLARITY CHARACTERISTICS



KEY TO SYMBOLS

Red symbols indicate internal characteristics.
Green symbols indicate external characteristics.

COLOR

D E F G H I J Faint Very Light Light

CLARITY

IF WS¹⁻² VS¹⁻² SI¹⁻² I¹⁻³

Internally Flawless	Very Very Slightly Included	Very Slightly Included	Slightly Included	Included
------------------------	--------------------------------	---------------------------	----------------------	----------



© IGI 2020, International Gemological Institute

FD - 10 20

www.igi.org

THIS DOCUMENT WAS PRODUCED WITH THE FOLLOWING SECURITY MEASURES: SPECIAL DOCUMENT PAPER, INK SCREENS, WATERMARK, BATHOPHONY AND DESKTOP LOCKS, AND OTHER SECURITY FEATURES NOT LISTED. AND DO NOT DISCLOSE TO ANY UNAUTHORIZED PERSONS.

LABORATORY GROWN DIAMOND REPORT



May 6, 2025

IGI Report Number **LG704503179**

Description	LABORATORY GROWN DIAMOND
-------------	--------------------------

Shape and Cutting Style **SQUARE EMERALD CUT**

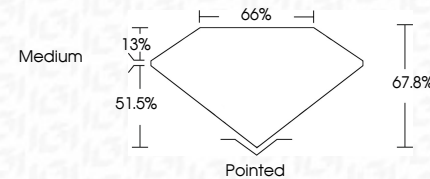
Measurements **8.95 X 8.85 X 6.00 MM**

GRADING RESULTS

Carat Weight **4.12 CARATS**

Color Grade	E
-------------	---

Clarity Grade VS 2



ADDITIONAL GRADING INFORMATION

Polish **EXCELLENT**Symmetry **EXCELLENT**Fluorescence **NONE**Inscription(s) LG704503179

Comments: This Laboratory Grown Diamond was created by Chemical Vapor Deposition (CVD) growth process.
Type IIa



IG

<p>May 6, 2025</p> <p>GI Report No LG704503179</p> <p>SQUARE MILLIMETER CUT</p>	<p>4.12 CARATS</p> <p>Vs2</p> <p>67.8%</p> <p>65%</p> <p>Medium</p> <p>Polished</p> <p>EXCELLENT</p> <p>EXCELLENT</p> <p>NONE</p> <p>681 LG704503179</p>	<p>9.95 X 8.85 X 6.00 MM</p> <p>Carat Weight</p> <p>Color Grade</p> <p>Clarity Grade</p> <p>Depth</p> <p>Table</p> <p>Girdle</p> <p>Culet</p> <p>Polish</p> <p>Symmetry</p> <p>Fluorescence</p> <p>Inscriptions(s)</p>	<p>Comments:</p> <p>This Laboratory Grown Diamond was created by Chemical Vapor Deposition (CVD) growth process.</p> <p>Type IIa</p>
---	--	--	--