



INTERNATIONAL
GEMOLOGICAL
INSTITUTE

ELECTRONIC COPY

LABORATORY GROWN DIAMOND REPORT

May 4, 2025

IGI Report Number LG704503970

Description LABORATORY GROWN DIAMOND

Shape and Cutting Style EMERALD CUT

Measurements 7.63 X 5.36 X 3.37 MM

GRADING RESULTS

Carat Weight 1.40 CARAT

Color Grade D

Clarity Grade VVS 2

ADDITIONAL GRADING INFORMATION

Polish EXCELLENT

Symmetry EXCELLENT

Fluorescence NONE

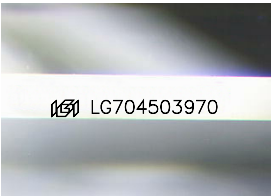
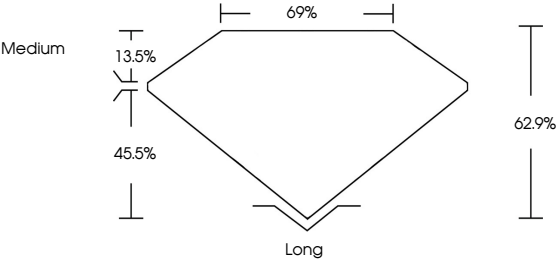
Inscription(s) LG704503970

Comments: This Laboratory Grown Diamond was created by Chemical Vapor Deposition (CVD) growth process.
Type IIa

LG704503970

Report verification at igi.org

PROPORTIONS



Sample Image Used

COLOR

D	E	F	G	H	I	J	Faint	Very Light	Light
---	---	---	---	---	---	---	-------	------------	-------

CLARITY

IF	VS ¹⁻²	VS ¹⁻²	SI ¹⁻²	I ¹⁻³
Internally Flawless	Very Very Slightly Included	Very Slightly Included	Slightly Included	Included

LABORATORY GROWN DIAMOND REPORT



May 4, 2025

IGI Report Number LG704503970

Description LABORATORY GROWN DIAMOND

Shape and Cutting Style EMERALD CUT

Measurements 7.63 X 5.36 X 3.37 MM

GRADING RESULTS

Carat Weight 1.40 CARAT

Color Grade D

Clarity Grade VVS 2

ADDITIONAL GRADING INFORMATION

Polish EXCELLENT

Symmetry EXCELLENT

Fluorescence NONE

Inscription(s) LG704503970

Comments: This Laboratory Grown Diamond was created by Chemical Vapor Deposition (CVD) growth process.
Type IIa



IGI



May 4, 2025

IGI Report No LG704503970

EMERALD CUT

7.63 X 5.36 X 3.37 MM

Carat Weight

Color Grade

Clarity Grade

Depth

Table

Girdle

1.40 CARAT

D

VVS 2

62.9%

69%

Medium

Long

EXCELLENT

EXCELLENT

NONE

LG704503970

Culet

Polish

Symmetry

Fluorescence

Inscription(s)

Comments: This Laboratory Grown Diamond was created by Chemical Vapor Deposition (CVD) growth process.
Type IIa