



INTERNATIONAL GEMOLOGICAL INSTITUTE

ELECTRONIC COPY

LABORATORY GROWN DIAMOND REPORT

May 10, 2025
IGI Report Number **LG704576454**
Description **LABORATORY GROWN DIAMOND**
Shape and Cutting Style **OVAL BRILLIANT**
Measurements **5.28 X 3.68 X 2.21 MM**

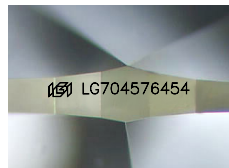
GRADING RESULTS

Carat Weight **0.27 CARAT**
Color Grade **D**
Clarity Grade **VS 1**

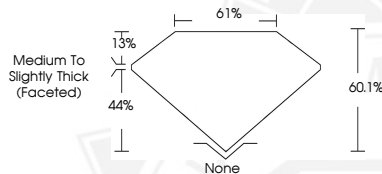
ADDITIONAL GRADING INFORMATION

Polish **GOOD**
Symmetry **GOOD**
Fluorescence **NONE**
Inscription(s) **IGI LG704576454**

Comments: As Grown - No indication of post-growth treatment.
This Laboratory Grown Diamond was created by High Pressure High Temperature (HPHT) growth process.
Type II



Sample Image Used



May 10, 2025
IGI Report Number **LG704576454**
OVAL BRILLIANT
LABORATORY GROWN DIAMOND
5.28 X 3.68 X 2.21 MM
Carat Weight **0.27 CARAT**
Color Grade **D**
Clarity Grade **VS 1**
Polish **GOOD**
Symmetry **GOOD**
Fluorescence **NONE**
Inscription(s) **IGI LG704576454**

Comments: As Grown - No indication of post-growth treatment. This Laboratory Grown Diamond was created by High Pressure High Temperature (HPHT) growth process. Type II



May 10, 2025
IGI Report Number **LG704576454**
OVAL BRILLIANT
LABORATORY GROWN DIAMOND
5.28 X 3.68 X 2.21 MM
Carat Weight **0.27 CARAT**
Color Grade **D**
Clarity Grade **VS 1**
Polish **GOOD**
Symmetry **GOOD**
Fluorescence **NONE**
Inscription(s) **IGI LG704576454**

Comments: As Grown - No indication of post-growth treatment. This Laboratory Grown Diamond was created by High Pressure High Temperature (HPHT) growth process. Type II



THIS DOCUMENT WAS PRODUCED WITH THE FOLLOWING SECURITY MEASURES: SPECIAL DOCUMENT PAPER, INK SCREENS, WATERMARK, BACKGROUND DESIGN, HOLOGRAM AND OTHER SECURITY FEATURES NOT LISTED AND DO EXCEED DOCUMENT SECURITY INDUSTRY GUIDELINES.

For terms & conditions and to verify this report, please visit www.igi.org