



ELECTRONIC COPY

LG704589982 Report verification at igi.org



July 25, 2025 IGI Report Number LG704589982 Description LABORATORY GROWN DIAMOND Shape and Cutting Style ROUND BRILLIANT Measurements 7.41 - 7.45 X 4.60 MM GRADING RESULTS Carat Weight 1.57 CARAT Color Grade E Clarity Grade INTERNALLY FLAWLESS Cut Grade IDEAL

LABORATORY GROWN DIAMOND REPORT

July 25, 2025 IGI Report Number LG704589982 Description LABORATORY GROWN DIAMOND Shape and Cutting Style ROUND BRILLIANT Measurements 7.41 - 7.45 X 4.60 MM

GRADING RESULTS

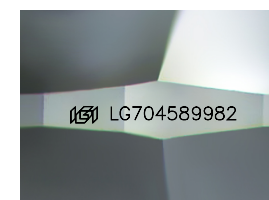
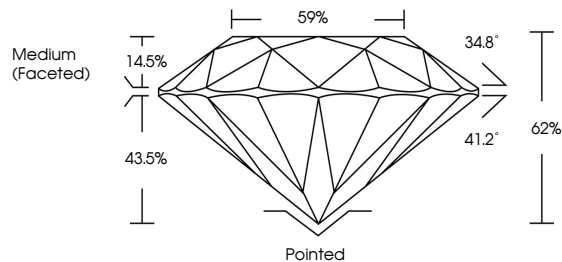
Carat Weight 1.57 CARAT Color Grade E Clarity Grade INTERNALLY FLAWLESS Cut Grade IDEAL

ADDITIONAL GRADING INFORMATION

Polish EXCELLENT Symmetry EXCELLENT Fluorescence NONE Inscription(s) IGI LG704589982

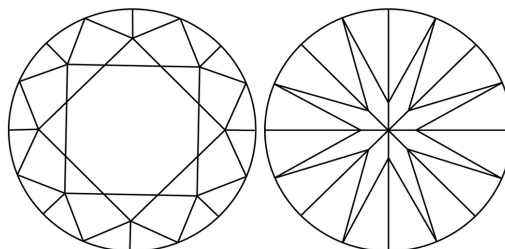
Comments: As Grown - No indication of post-growth treatment. This Laboratory Grown Diamond was created by High Pressure High Temperature (HPHT) growth process. Type II

PROPORTIONS



Sample Image Used

CLARITY CHARACTERISTICS



KEY TO SYMBOLS

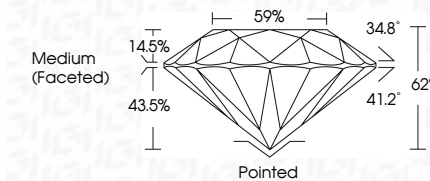
Red symbols indicate internal characteristics. Green symbols indicate external characteristics.

COLOR

D E F G H I J Faint Very Light Light

CLARITY

Table with columns for Clarity Grades: IF, VS 1-2, VS 1-2, SI 1-2, I 1-3 and their corresponding descriptions: Internally Flawless, Very Very Slightly Included, Very Slightly Included, Slightly Included, Included



ADDITIONAL GRADING INFORMATION

Polish EXCELLENT Symmetry EXCELLENT Fluorescence NONE Inscription(s) IGI LG704589982 Comments: As Grown - No indication of post-growth treatment. This Laboratory Grown Diamond was created by High Pressure High Temperature (HPHT) growth process. Type II



IGI



Summary of report details including date, report number, description, shape, measurements, grading results, and additional information.