



November 8, 2025

**IGI Report Number** LG704591692  
**ROUND BRILLIANT**  
**LABORATORY GROWN DIAMOND**  
**6.47 - 6.50 X 3.81 MM**

**0.99 CARAT**  
**E**  
**VS 1**  
**VERY GOOD**  
**EXCELLENT**  
**EXCELLENT**  
**NONE**  
**IGI LG704591692**

Comments: As Grown - No indication of post-growth treatment. This Laboratory Grown Diamond was created by High Pressure High Temperature (HPHT) growth process. Type II

**LABORATORY GROWN DIAMOND REPORT**

November 8, 2025  
IGI Report Number **LG704591692**  
Description **LABORATORY GROWN DIAMOND**  
Shape and Cutting Style **ROUND BRILLIANT**  
Measurements **6.47 - 6.50 X 3.81 MM**

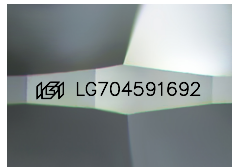
**GRADING RESULTS**

Carat Weight **0.99 CARAT**  
Color Grade **E**  
Clarity Grade **VS 1**  
Cut Grade **VERY GOOD**

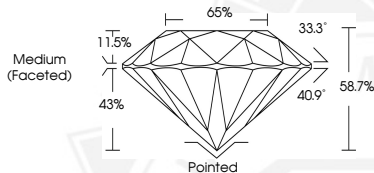
**ADDITIONAL GRADING INFORMATION**

Polish **EXCELLENT**  
Symmetry **EXCELLENT**  
Fluorescence **NONE**  
Inscription(s) **IGI LG704591692**

Comments: As Grown - No indication of post-growth treatment. This Laboratory Grown Diamond was created by High Pressure High Temperature (HPHT) growth process. Type II



Sample Image Used



November 8, 2025

**IGI Report Number** LG704591692  
**ROUND BRILLIANT**  
**LABORATORY GROWN DIAMOND**  
**6.47 - 6.50 X 3.81 MM**

**0.99 CARAT**  
**E**  
**VS 1**  
**VERY GOOD**  
**EXCELLENT**  
**EXCELLENT**  
**NONE**  
**IGI LG704591692**

Comments: As Grown - No indication of post-growth treatment. This Laboratory Grown Diamond was created by High Pressure High Temperature (HPHT) growth process. Type II

THIS DOCUMENT WAS PRODUCED WITH THE FOLLOWING SECURITY MEASURES: SPECIAL DOCUMENT PAPER, INK SCREENS, WATERMARK, BACKGROUND DESIGNS, HOLOGRAM AND OTHER SECURITY FEATURES NOT LISTED AND DO EXCEED DOCUMENT SECURITY INDUSTRY GUIDELINES.