



**ELECTRONIC COPY**

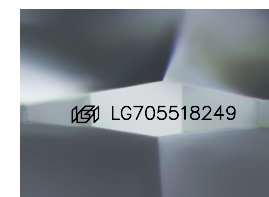
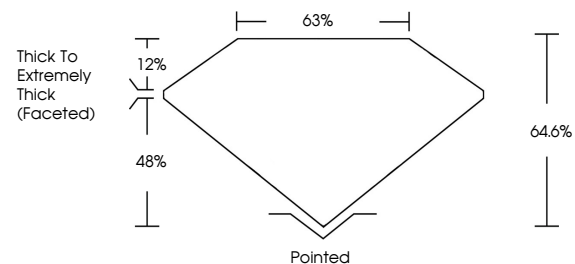
LG705518249  
Report verification at igi.org



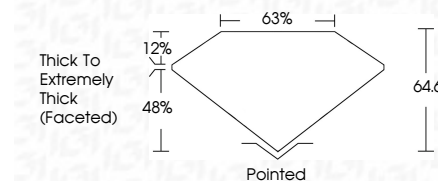
May 16, 2025  
IGI Report Number **LG705518249**  
Description **LABORATORY GROWN DIAMOND**  
Shape and Cutting Style **CUSHION MODIFIED BRILLIANT**  
Measurements **6.52 X 6.11 X 3.95 MM**  
**GRADING RESULTS**  
Carat Weight **1.38 CARAT**  
Color Grade **FANCY VIVID GREEN**  
Clarity Grade **VS 1**

May 16, 2025  
IGI Report Number **LG705518249**  
Description **LABORATORY GROWN DIAMOND**  
Shape and Cutting Style **CUSHION MODIFIED BRILLIANT**  
Measurements **6.52 X 6.11 X 3.95 MM**  
**GRADING RESULTS**  
Carat Weight **1.38 CARAT**  
Color Grade **FANCY VIVID GREEN**  
Clarity Grade **VS 1**

**PROPORTIONS**



Sample Image Used



**ADDITIONAL GRADING INFORMATION**

Polish **EXCELLENT**  
Symmetry **VERY GOOD**  
Fluorescence **NONE**  
Inscription(s) **IGI LG705518249**

Comments: This Laboratory Grown Diamond was created by High Pressure High Temperature (HPHT) growth process.  
Indications of post-growth treatment.

**ADDITIONAL GRADING INFORMATION**

Polish **EXCELLENT**  
Symmetry **VERY GOOD**  
Fluorescence **NONE**  
Inscription(s) **IGI LG705518249**

Comments: This Laboratory Grown Diamond was created by High Pressure High Temperature (HPHT) growth process.  
Indications of post-growth treatment.

**COLOR**

D E F G H I J Faint Very Light Light

**CLARITY**

IF	VS <sup>1-2</sup>	VS <sup>1-2</sup>	SI <sup>1-2</sup>	I <sup>1-3</sup>
Internally Flawless	Very Very Slightly Included	Very Slightly Included	Slightly Included	Included



**IGI**



May 16, 2025  
IGI Report No **LG705518249**  
**CUSHION MODIFIED BRILLIANT**  
6.52 X 6.11 X 3.95 MM  
1.38 CARAT  
Color Grade **FANCY VIVID GREEN**  
Clarity Grade **VS 1**  
Depth **64.6%**  
Table **63%**  
Girdle **Thick To Extremely Thick (Faceted)**  
Culet **Pointed**  
Polish **EXCELLENT**  
Symmetry **VERY GOOD**  
Fluorescence **NONE**  
Inscription(s) **IGI LG705518249**

Comments: This Laboratory Grown Diamond was created by High Pressure High Temperature (HPHT) growth process.  
Indications of post-growth treatment.