



ELECTRONIC COPY

LG705523824
Report verification at igi.org



May 13, 2025

IGI Report Number **LG705523824**

Description **LABORATORY GROWN DIAMOND**

Shape and Cutting Style **PEAR BRILLIANT**

Measurements **8.42 X 6.11 X 3.54 MM**

GRADING RESULTS

Carat Weight **1.12 CARAT**

Color Grade **FANCY VIVID PINK**

Clarity Grade **VS 2**

LABORATORY GROWN DIAMOND REPORT

May 13, 2025

IGI Report Number **LG705523824**

Description **LABORATORY GROWN DIAMOND**

Shape and Cutting Style **PEAR BRILLIANT**

Measurements **8.42 X 6.11 X 3.54 MM**

GRADING RESULTS

Carat Weight **1.12 CARAT**

Color Grade **FANCY VIVID PINK**

Clarity Grade **VS 2**

ADDITIONAL GRADING INFORMATION

Polish **EXCELLENT**

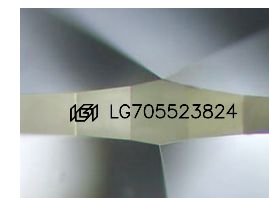
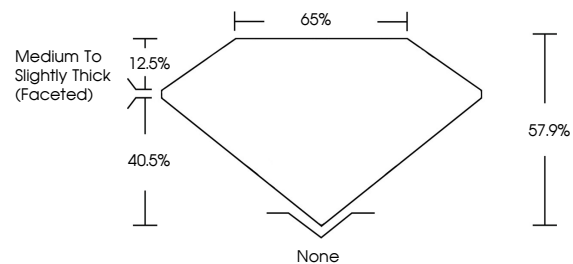
Symmetry **EXCELLENT**

Fluorescence **SLIGHT**

Inscription(s) **LG705523824**

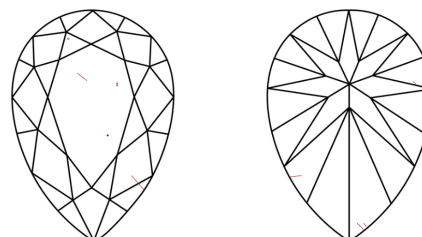
Comments: This Laboratory Grown Diamond was created by Chemical Vapor Deposition (CVD) growth process. Indications of post-growth treatment.

PROPORTIONS



Sample Image Used

CLARITY CHARACTERISTICS



KEY TO SYMBOLS

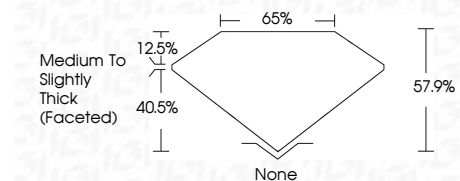
Red symbols indicate internal characteristics.
Green symbols indicate external characteristics.

COLOR

D E F G H I J Faint Very Light Light

CLARITY

IF	VS ¹⁻²	VS ¹⁻²	SI ¹⁻²	I ¹⁻³
Internally Flawless	Very Very Slightly Included	Very Slightly Included	Slightly Included	Included



ADDITIONAL GRADING INFORMATION

Polish **EXCELLENT**

Symmetry **EXCELLENT**

Fluorescence **SLIGHT**

Inscription(s) **LG705523824**

Comments: This Laboratory Grown Diamond was created by Chemical Vapor Deposition (CVD) growth process. Indications of post-growth treatment.



May 13, 2025
IGI Report No LG705523824
PEAR BRILLIANT

1.12 CARAT
Carat Weight
FANCY VIVID PINK
Color Grade

VS 2
Clarity Grade
8.42 X 6.11 X 3.54 MM
Depth
65%
Table
Medium to Slightly Thick (Faceted)
Girdle
None
Culet
EXCELLENT
Polish
EXCELLENT
Symmetry
SLIGHT
Fluorescence
None
Inscription(s)
 LG705523824

Comments: This Laboratory Grown Diamond was created by Chemical Vapor Deposition (CVD) growth process. Indications of post-growth treatment.