



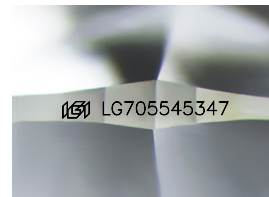
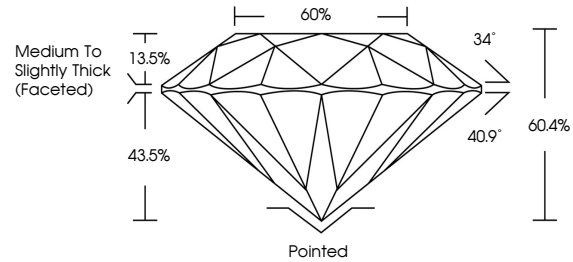
**INTERNATIONAL
GEMOLOGICAL
INSTITUTE**

ELECTRONIC COPY

LABORATORY GROWN DIAMOND REPORT

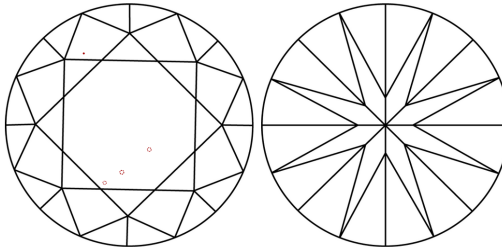
LG705545347
Report verification at igi.org

PROPORTIONS



Sample Image Used

CLARITY CHARACTERISTICS



KEY TO SYMBOLS

Red symbols indicate internal characteristics.
Green symbols indicate external characteristics.

COLOR

D E F G H I J Faint Very Light Light

CLARITY

IF WS¹⁻² VS¹⁻² SI¹⁻² I¹⁻³

Internally Flawless	Very Very Slightly Included	Very Slightly Included	Slightly Included	Included
------------------------	--------------------------------	---------------------------	----------------------	----------



© IGI 2020, International Gemological Institute

FD - 10 20

LABORATORY GROWN DIAMOND REPORT



May 10, 2025

IGI Report Number **LG705545347**

Description	LABORATORY GROWN DIAMOND
-------------	--------------------------

Shape and Cutting Style **ROUND BRILLIANT**

Measurements 12.28 - 12.32 X 7.43 MM

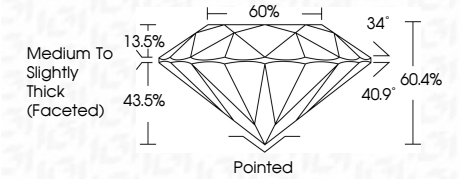
GRADING RESULTS

Carat Weight **6.90 CARATS**

Color Grade	F
-------------	---

Clarity Grade VVS 2

Cut Grade **IDEAL**



ADDITIONAL GRADING INFORMATION

Polish **EXCELLENT**Symmetry **EXCELLENT**Fluorescence **NONE**Inscription(s) LG705545347

Comments: This Laboratory Grown Diamond was created by Chemical Vapor Deposition (CVD) growth process.
Type IIa



IGI

May 10, 2026	IGI Report No. LG70545347
ROUND BRILLIANT	
12.26 - 12.32 X 7.43 MM	6.00 CARATS
Carat Weight	F
Color Grade	VVS2
Clarity Grade	IDEAL
Cut Grade	60.4%
Depth	60.4%
Table	60%
Grade	Medium to Slightly Thick (Faceted)
Culet	Partied
Polish	EXCELLENT
Symmetry	EXCELLENT
Fluorescence	NONE
Inscriptions(s)	IGI LG70545347
Comments:	
This Laboratory Grown Diamond was created by Chemical Vapor Deposition (CVD) growth process.	
Type IId	