



ELECTRONIC COPY

LG706503214
Report verification at igi.org



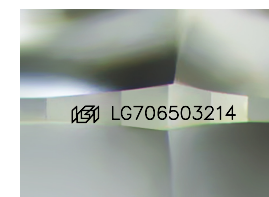
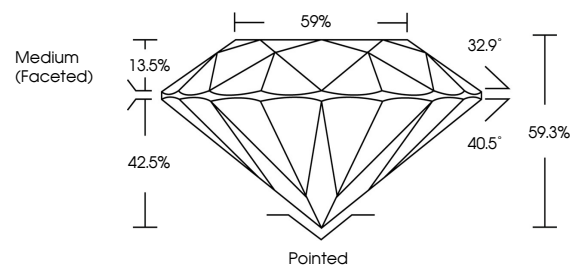
May 6, 2025
IGI Report Number **LG706503214**
Description **LABORATORY GROWN DIAMOND**
Shape and Cutting Style **ROUND BRILLIANT**
Measurements **11.51 - 11.57 X 6.85 MM**
GRADING RESULTS
Carat Weight **5.57 CARATS**
Color Grade **E**
Clarity Grade **VS 2**
Cut Grade **IDEAL**

May 6, 2025
IGI Report Number **LG706503214**
Description **LABORATORY GROWN DIAMOND**
Shape and Cutting Style **ROUND BRILLIANT**
Measurements **11.51 - 11.57 X 6.85 MM**
GRADING RESULTS
Carat Weight **5.57 CARATS**
Color Grade **E**
Clarity Grade **VS 2**
Cut Grade **IDEAL**

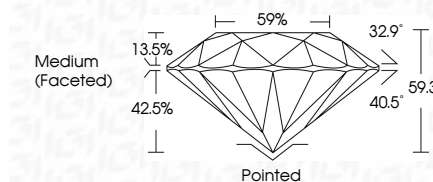
ADDITIONAL GRADING INFORMATION
Polish **EXCELLENT**
Symmetry **EXCELLENT**
Fluorescence **NONE**
Inscription(s) **IGI LG706503214**

Comments: This Laboratory Grown Diamond was created by Chemical Vapor Deposition (CVD) growth process. Type IIa

PROPORTIONS



Sample Image Used



COLOR

D E F G H I J Faint Very Light Light

CLARITY

IF	VS ¹⁻²	VS ¹⁻²	SI ¹⁻²	I ¹⁻³
Internally Flawless	Very Very Slightly Included	Very Slightly Included	Slightly Included	Included

ADDITIONAL GRADING INFORMATION

Polish **EXCELLENT**
Symmetry **EXCELLENT**
Fluorescence **NONE**
Inscription(s) **IGI LG706503214**
Comments: This Laboratory Grown Diamond was created by Chemical Vapor Deposition (CVD) growth process. Type IIa



IGI



May 6, 2025
IGI Report No LG706503214
ROUND BRILLIANT
11.51 - 11.57 X 6.85 MM
5.57 CARATS
E
VS 2
IDEAL
59.3%
Medium (Faceted)
Pointed
EXCELLENT
EXCELLENT
NONE
IGI LG706503214
Comments: This Laboratory Grown Diamond was created by Chemical Vapor Deposition (CVD) growth process. Type IIa