



**ELECTRONIC COPY**

LG706511707  
Report verification at igi.org



May 20, 2025

IGI Report Number **LG706511707**

Description **LABORATORY GROWN DIAMOND**

Shape and Cutting Style **CUT CORNERED  
RECTANGULAR MODIFIED  
BRILLIANT**

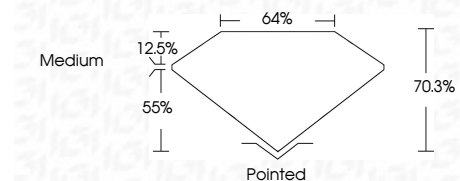
Measurements **8.73 X 6.17 X 4.34 MM**

**GRADING RESULTS**

Carat Weight **1.92 CARAT**

Color Grade **D**

Clarity Grade **VS 1**



**ADDITIONAL GRADING INFORMATION**

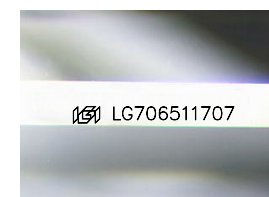
Polish **EXCELLENT**

Symmetry **VERY GOOD**

Fluorescence **NONE**

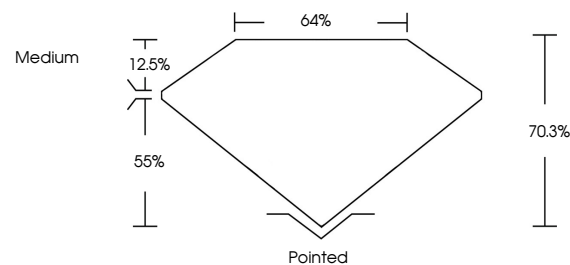
Inscription(s) **IGI LG706511707**

Comments: This Laboratory Grown Diamond was created by Chemical Vapor Deposition (CVD) growth process. Type IIa

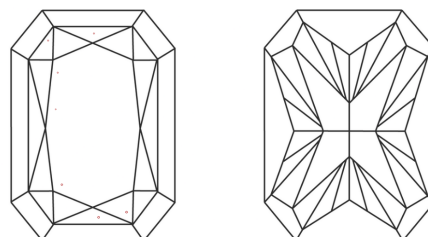


Sample Image Used

**PROPORTIONS**



**CLARITY CHARACTERISTICS**



**KEY TO SYMBOLS**

Red symbols indicate internal characteristics.  
Green symbols indicate external characteristics.

**COLOR**

D E F G H I J Faint Very Light Light

**CLARITY**

IF WS<sup>1-2</sup> VS<sup>1-2</sup> SI<sup>1-2</sup> I<sup>1-3</sup>

Internally Flawless Very Very Slightly Included Very Slightly Included Slightly Included Included

May 20, 2025  
IGI Report No LG706511707  
CUT CORNERED RECT. MODIFIED BRILLIANT  
8.73 X 6.17 X 4.34 MM  
Carat Weight 1.92 CARAT  
Color Grade D  
Clarity Grade VS 1  
Depth 70.3%  
Table 12.5%  
Girdle Medium  
Culet Pointed  
Polish EXCELLENT  
Symmetry VERY GOOD  
Fluorescence NONE  
Inscription(s) IGI LG706511707

Comments: This Laboratory Grown Diamond was created by Chemical Vapor Deposition (CVD) growth process. Type IIa

