



ELECTRONIC COPY

LABORATORY GROWN DIAMOND REPORT

May 17, 2025	
IGI Report Number	LG706527903
Description	LABORATORY GROWN DIAMOND
Shape and Cutting Style	ROUND BRILLIANT
Measurements	10.30 - 10.34 X 6.28 MM

GRADING RESULTS

Carat Weight	4.10 CARATS
Color Grade	E
Clarity Grade	VVS 2
Cut Grade	IDEAL

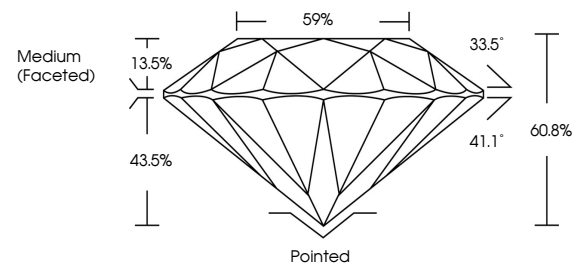
ADDITIONAL GRADING INFORMATION

Polish	EXCELLENT
Symmetry	EXCELLENT
Fluorescence	NONE
Inscription(s)	 LG706527903

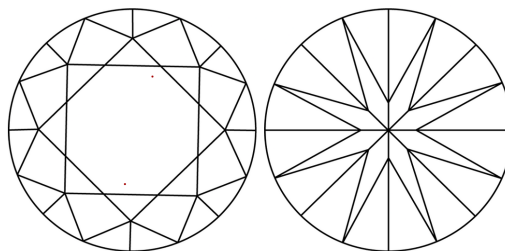
Comments: This Laboratory Grown Diamond was created by Chemical Vapor Deposition (CVD) growth process.
Type IIa

LG706527903
Report verification at igi.org

PROPORTIONS

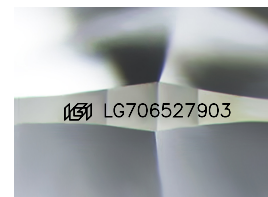


CLARITY CHARACTERISTICS



KEY TO SYMBOLS

Red symbols indicate internal characteristics.
Green symbols indicate external characteristics.



Sample Image Used

COLOR

D E F G H I J Faint Very Light Light

CLARITY

IF VS¹⁻² VS¹⁻² S¹⁻² |¹⁻³

Internally Flawless	Very Very Slightly Included	Very Slightly Included	Slightly Included	Included
------------------------	--------------------------------	---------------------------	----------------------	----------

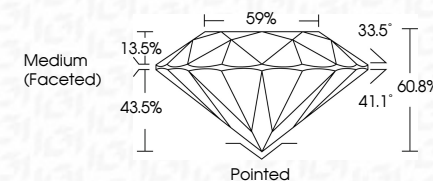
LABORATORY GROWN DIAMOND REPORT



May 17, 2025	
IGI Report Number	LG706527903
Description	LABORATORY GROWN DIAMOND
Shape and Cutting Style	ROUND BRILLIANT
Measurements	10.30 - 10.34 X 6.28 MM

GRADING RESULTS

Carat Weight	4.10 CARATS
Color Grade	E
Clarity Grade	VVS 2
Cut Grade	IDEAL



ADDITIONAL GRADING INFORMATION

Polish	EXCELLENT
Symmetry	EXCELLENT
Fluorescence	NONE
Inscription(s)	 LG706527903

Comments: This Laboratory Grown Diamond was created by Chemical Vapor Deposition (CVD) growth process.
Type IIa



© IGI 2020, International Gemological Institute

FD - 10 20



THIS DOCUMENT WAS PRODUCED WITH THE FOLLOWING SECURITY MEASURES: SPECIAL DOCUMENT PAPER, INK SCREENS, WATERMARK, BACKGROUND DESIGNS, HOLOGRAM AND OTHER SECURITY FEATURES NOT LISTED AND DO EXCEED DOCUMENT SECURITY INDUSTRY GUIDELINE

www.igi.org

May 17, 2025	IGI Report No. LG704627903	ROUND BRILLIANT	10.30 - 10.34 X 6.28 MM	Carat Weight	4.10 CARATS
				Color Grade	E
				Clarity Grade	VVS 2
				Cut Grade	IDEAL
				Depth	60.8%
				Table	59%
				Grade	Medium (Fosched)
				Culet	Pointed
				Polish	EXCELLENT
				Symmetry	EXCELLENT
				Fluorescence	NONE
				Inscriptions	#61 LG704627903
				Comments:	
				This Laboratory Grown Diamond was created by Chemical Vapor Deposition (CVD) growth process.	
				Type IIA	