



ELECTRONIC COPY

LG706534971
Report verification at igi.org



May 8, 2025

IGI Report Number **LG706534971**

Description **LABORATORY GROWN DIAMOND**

Shape and Cutting Style **ROUND BRILLIANT**

Measurements **7.41 - 7.44 X 4.42 MM**

GRADING RESULTS

Carat Weight **1.48 CARAT**

Color Grade **D**

Clarity Grade **VVS 2**

Cut Grade **IDEAL**

May 8, 2025

IGI Report Number **LG706534971**

Description **LABORATORY GROWN DIAMOND**

Shape and Cutting Style **ROUND BRILLIANT**

Measurements **7.41 - 7.44 X 4.42 MM**

GRADING RESULTS

Carat Weight **1.48 CARAT**

Color Grade **D**

Clarity Grade **VVS 2**

Cut Grade **IDEAL**

ADDITIONAL GRADING INFORMATION

Polish **EXCELLENT**

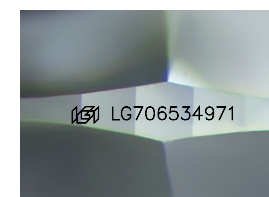
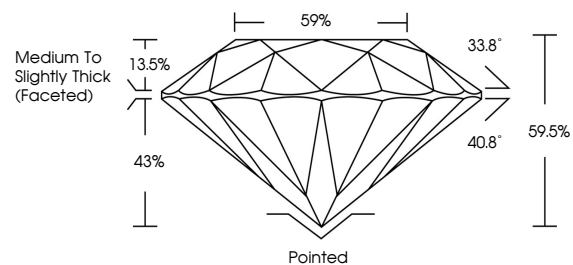
Symmetry **EXCELLENT**

Fluorescence **NONE**

Inscription(s) **LG706534971**

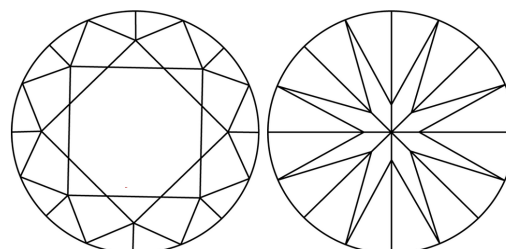
Comments: This Laboratory Grown Diamond was created by Chemical Vapor Deposition (CVD) growth process.
Type IIa

PROPORTIONS



Sample Image Used

CLARITY CHARACTERISTICS



KEY TO SYMBOLS

Red symbols indicate internal characteristics.
Green symbols indicate external characteristics.

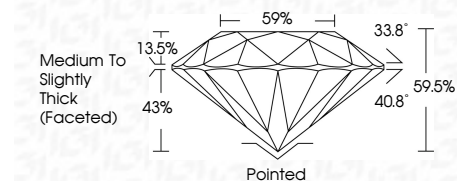
COLOR

D E F G H I J Faint Very Light Light

CLARITY

IF WS¹⁻² VS¹⁻² SI¹⁻² I¹⁻³

Internally Flawless Very Very Slightly Included Very Slightly Included Slightly Included Included



ADDITIONAL GRADING INFORMATION

Polish **EXCELLENT**

Symmetry **EXCELLENT**

Fluorescence **NONE**

Inscription(s) **LG706534971**

Comments: This Laboratory Grown Diamond was created by Chemical Vapor Deposition (CVD) growth process.
Type IIa



May 8, 2025	IGI Report No LG706534971	1.48 CARAT	D	Pointed	EXCELLENT	EXCELLENT	NONE	LG706534971
ROUND BRILLIANT	7.41 - 7.44 X 4.42 MM	Color Grade	VVS 2	Medium To Slightly Thick (Faceted)	Polish	Symmetry	Fluorescence	Inscription(s)
		Clarity Grade	IDEAL		EXCELLENT	EXCELLENT	NONE	
		Cut Grade	59.05%					
		Table	59%					
		Depth	43%					
		Grille	40.8°					
		Culet	33.8°					
		Polish	40.8°					
		Symmetry	59.5%					
		Fluorescence	59.5%					
		Inscription(s)	59.5%					

Comments: This Laboratory Grown Diamond was created by Chemical Vapor Deposition (CVD) growth process.
Type IIa