



**INTERNATIONAL
GEMOLOGICAL
INSTITUTE**

ELECTRONIC COPY

LG706561334
Report verification at igi.org

LABORATORY GROWN DIAMOND REPORT



May 12, 2025

IGI Report Number **LG706561334**

Description	LABORATORY GROWN DIAMOND
-------------	--------------------------

Shape and Cutting Style **PEAR BRILLIANT**

Measurements 11.68 X 7.79 X 4.69 MM

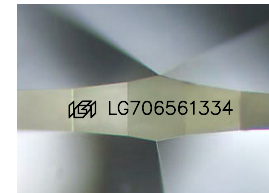
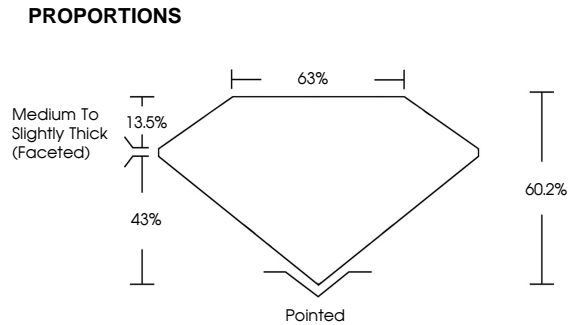
GRADING RESULTS

Carat Weight **2.50 CARATS**

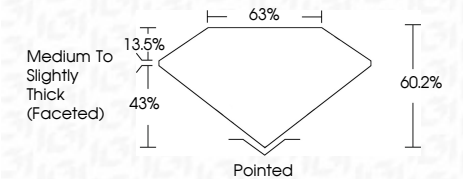
Color Grade	F
-------------	---

Clarity Grade **VVS 2**

Cut Grade **VERY GOOD**



Sample Image Used



COLOR

D E F G H I J Faint Very Light Light

CLARITY

IF WS¹⁻² VS¹⁻² SI¹⁻² I¹⁻³

Internally Flawless	Very Very Slightly Included	Very Slightly Included	Slightly Included	Included
------------------------	--------------------------------	---------------------------	----------------------	----------



© IGI 2020, International Gemological Institute

FD - 10 20



THIS DOCUMENT WAS PRODUCED WITH THE FOLLOWING SECURITY MEASURES: SPECIAL DOCUMENT PAPER, INK SCREENS, WATERMARK BACKGROUND DESIGNS, HOLOGRAM AND OTHER SECURITY FEATURES NOT LISTED AND DO EXCEED DOCUMENT SECURITY INDUSTRY GUIDELINES



IGI

May 12, 2026	Carat Weight	2.50 CARATS
GI Report No. LG706561334	Color Grade	F
PEAR BRILLANT	Clarity Grade	VS 2
	Cut Grade	VERY GOOD
	Depth	60.2%
	Table	65%
	Girdle	Medium to Slightly Thick (excellent)
	Culet	Pointed
	Polish	EXCELLENT
	Symmetry	EXCELLENT
	Fluorescence	NONE
	Inscriptions(s)	489 LG706561334
	Comments:	The Laboratory Grown Diamond was created by Chemical Vapor Deposition (CVD) growth process.
	Type IIA	