

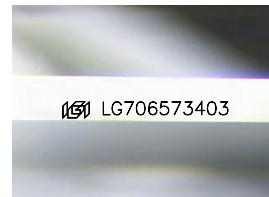
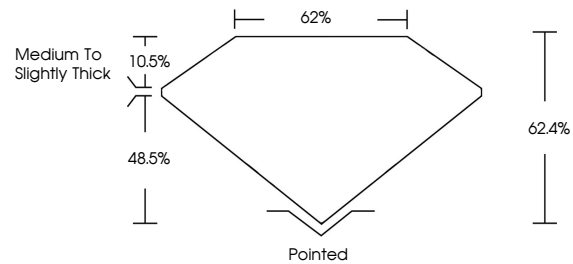


**INTERNATIONAL  
GEMOLOGICAL  
INSTITUTE**

**ELECTRONIC COPY**

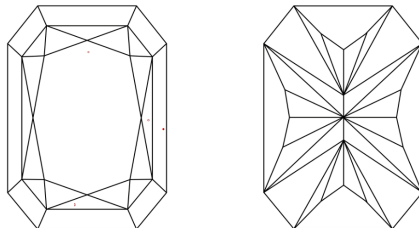
LG706573403  
Report verification at [igi.org](https://igi.org)

## PROPORTIONS



Sample Image Used

## CLARITY CHARACTERISTICS



## KEY TO SYMBOLS

Red symbols indicate internal characteristics.  
Green symbols indicate external characteristics.

**COLOR**

D E F G H I J Faint Very Light Light

## CLARITY

IF                      WS<sup>1-2</sup>                      VS<sup>1-2</sup>                      SI<sup>1-2</sup>                      I<sup>1-3</sup>

Internally Flawless	Very Very Slightly Included	Very Slightly Included	Slightly Included	Included
------------------------	--------------------------------	---------------------------	----------------------	----------

## LABORATORY GROWN DIAMOND REPORT



May 15, 2025

IGI Report Number **LG706573403**

Description	LABORATORY GROWN DIAMOND
-------------	--------------------------

Shape and Cutting Style

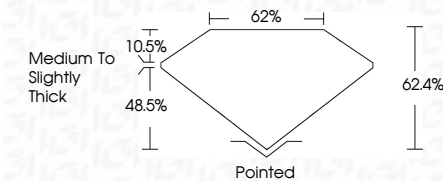
CUT CORNERED  
RECTANGULAR MODIFIED  
BRILLIANT

Measurements **14.74 X 9.54 X 5.95 MM**

## GRADING RESULTS

Carat Weight **7.06 CARATS**

Color Grade	F
-------------	---

Clarity Grade VVS 2

### ADDITIONAL GRADING INFORMATION

Polish **EXCELLENCE**Symmetry **EXCELLENCE**

Fluorescence NONI

Inscription(s)  LG70657340

Comments: This Laboratory Grown Diamond was created by Chemical Vapor Deposition (CVD) growth process.  
Type IIa



IG



© IGI 2020, International Gemological Institute

FD - 10 20

**www.igi.org**

THIS DOCUMENT WAS PRODUCED WITH THE FOLLOWING SECURITY MEASURES: SPECIAL DOCUMENT PAPER, INK SCREENS, WATERMARK, BACKGROUND DESIGNS, HOLOGRAM AND OTHER SECURITY FEATURES NOT LISTED AND DO EXCEED DOCUMENT SECURITY INDUSTRY GUIDELINES

May 15, 2025	GI Report No LG70573403	CU CORNERED RECT. MODIFIED BRILLIANT
14.74 X 9.54 X 5.95 MM	Carat Weight	7.06 CARATS
	Color Grade	VVS 2
	Clarity Grade	62.4%
	Depth	62%
	Table	Medium to Slightly Thick
	Girdle	Polished
	Culet	EXCELLENT
	Polish	EXCELLENT
	Symmetry	NONE
	Fluor.essence	681 LG70573403
	Inscription(s)	
Comments: Very, Very Grown Diamond was treated by Chemical Vapor Deposition (CVD) growth process. Type IIA		