



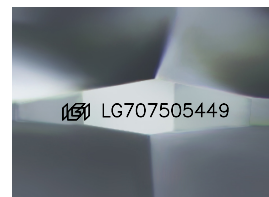
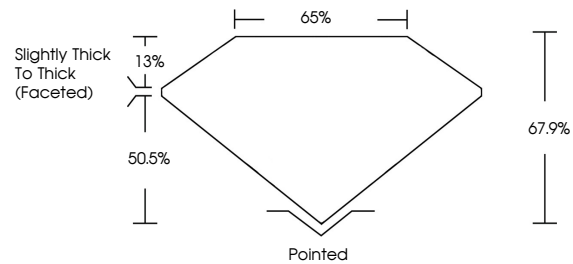
**INTERNATIONAL
GEMOLOGICAL
INSTITUTE**

ELECTRONIC COPY

LABORATORY GROWN DIAMOND REPORT

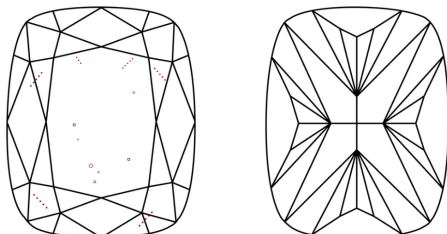
LG707505449
Report verification at igi.org

PROPORTIONS



Sample Image Used

CLARITY CHARACTERISTICS



KEY TO SYMBOLS

Red symbols indicate internal characteristics.
Green symbols indicate external characteristics.

COLOR

D E F G H I J Faint Very Light Light

CLARITY

IF WS¹⁻² VS¹⁻² SI¹⁻² I¹⁻³

Internally Flawless	Very Very Slightly Included	Very Slightly Included	Slightly Included	Included
------------------------	--------------------------------	---------------------------	----------------------	----------



© IGI 2020, International Gemological Institute

FD - 10 20

www.igi.org

LABORATORY GROWN DIAMOND REPORT



May 16, 2025

IGI Report Number **LG707505449**

Description	LABORATORY GROWN DIAMOND
-------------	--------------------------

Shape and Cutting Style **CUSHION MODIFIED
BRILLIANT**

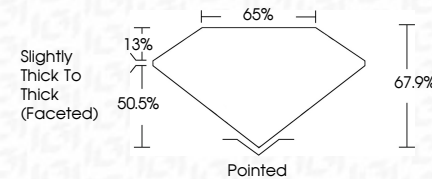
Measurements **9.79 X 7.53 X 5.11 MM**

GRADING RESULTS

Carat Weight **3.06 CARATS**

Color Grade	G
-------------	---

Clarity Grade **VS 2**



ADDITIONAL GRADING INFORMATION

Polish **EXCELLENT**Symmetry **EXCELLENT**Fluorescence **NONE**Inscription(s) 131 LG707505449

Comments: This Laboratory Grown Diamond was created by Chemical Vapor Deposition (CVD) growth process.
Type IIa



IG

May 16, 2025	
IGI Report No. LG77095449	
CUSHION MODIFIED BRILLIANT	
9.79 X 7.53 X 5.11 MM	
Carat Weight	3.06 CARATS
Color Grade	G
Clarity Grade	VS 2
Depth	67.9%
Table	65%
Girdle	Slightly Thick To Thick (centered)
Culet	Pointed
Polish	EXCELLENT
Symmetry	EXCELLENT
Fluorescence	NONE
Inscription(s)	IGI LG77095449
Comments:	
	The Laboratory Grown Diamond was created by Chemical Vapor Deposition growth process.
	Type IIc

Comments:
This Laboratory Grown Diamond was created by Chemical Vapor Deposition (CVD) growth process.